



American University Facilities Planning Working Group

April 25, 2023

Agenda:

- Call to Order, Opening Remarks and Introductions
- Meltzer Center/SCAN Updates:
 - Preview of FPA Conditions
 - Updated Buffer Renderings
 - Schedule Review
- Jacobs Field Sound Barrier Update
- Open Floor Discussion on Facilities Issues
- Good of the Order

Ground Rules:

- Respect the Process
- Be present and Engaged
- Follow the Facilitators' Directions
- Allow Every Voice to Be Heard
- Speak Courteously and Respectfully to Others
- Maintain Zero Tolerance for Any Comment (Written or Verbal) that is Meant to Attack or Intimidate Another Person or is Obscene

Conditions Conceptual Overview

Site Development and Construction Management

- Development shall be consistent with plans submitted as Exhibit 2K1.
- Project shall be designed to achieve LEED Gold certification at a minimum.
- AU will comply with terms of Construction Management Plan submitted at Exhibit 2K.
- The General Contractor will follow DDOT truck routes based on the December 2020 DDOT Truck Map brochure.

Lighting

- Exterior lighting will be consistent with Exhibit 2E.
- Windows facing University Avenue will have automatic shades and rooms with exterior windows facing University Avenue will have occupancy sensors to ensure lights are off when not in use.
- Only lighting that is required for safety and security shall be provided at the Health and Wellness Court.

Noise

- Sound levels generated from activities at the Meltzer Center and building HVAC equipment shall not exceed the decibel levels at the property lines as detailed in Exhibit 2F.
- No amplified sound shall be permitted at the Health and Wellness Court.

Conditions Principles

Buffer

- AU will maintain and enhance the vegetative buffer along University Avenue in accordance with the plans submitted in Exhibit 2K1.

Building Operations

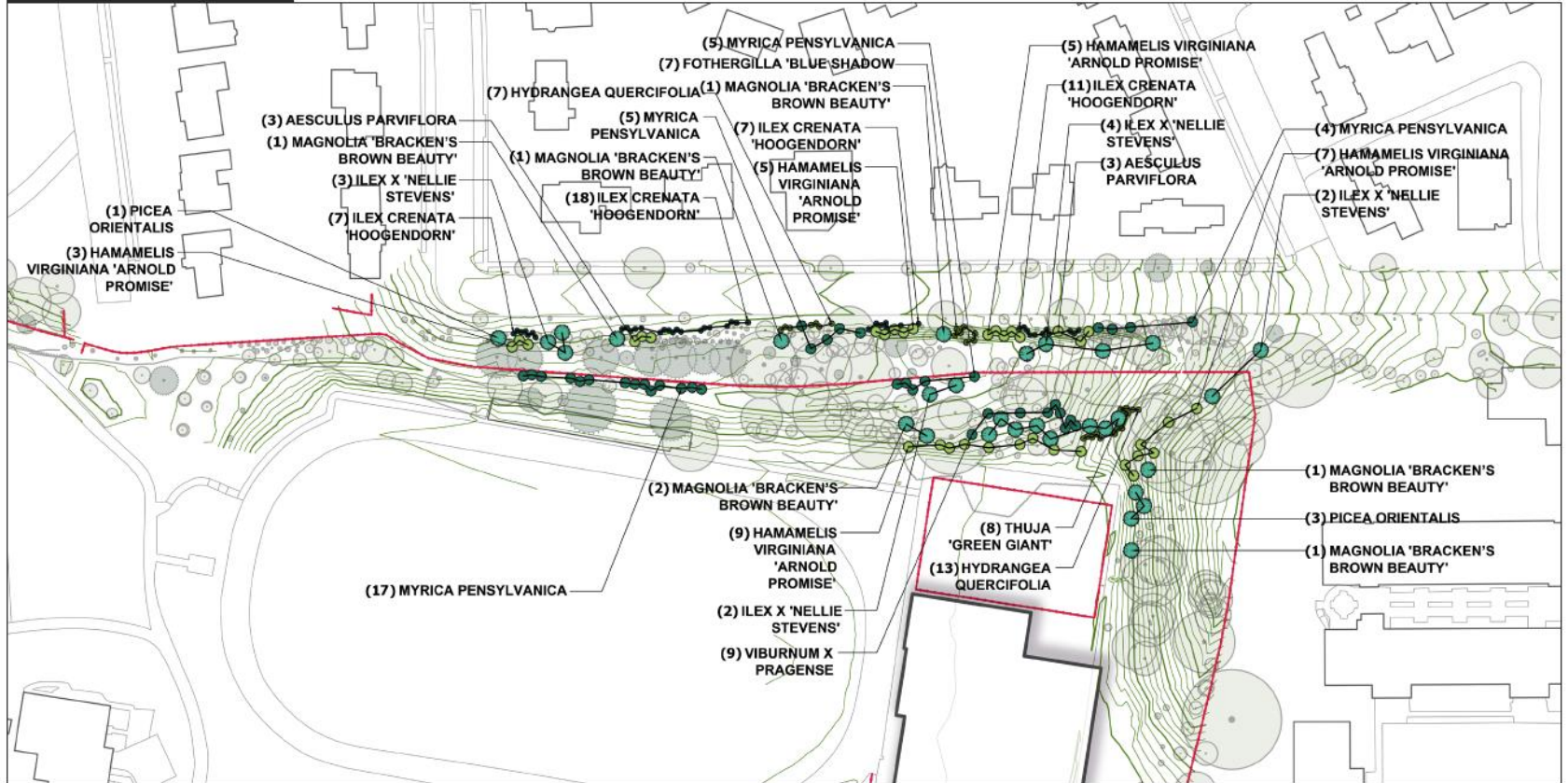
- Meltzer Center and SCAN will be open Monday through Sunday, from 6:00 A.M. to 12:00 A.M.
- After-hours access will be restricted to AU card access only.
- The Health and Wellness Court may only be used for activities during daylight hours.
- The Health and Wellness Court may be used by members of the community when not in use by AU.

Transportation

- AU will provide 50 short-term bicycle spaces.
- AU will continue to work with DDOT to expand two existing and install one new Capital BikeShare station.



PLANTING PLAN



- Evergreen trees
- Deciduous shrubs
- Evergreen shrubs
- Deciduous, small shrubs
- Evergreen, small shrubs



Jonathan Ceci
LANDSCAPE ARCHITECTS

AMERICAN UNIVERSITY
Meltzer Center Planting Buffer Design



Jonathan Ceci
LANDSCAPE
ARCHITECTS

AMERICAN UNIVERSITY
Meltzer Center Planting Buffer Design

RENDERED VIEWS 3

These illustrations are meant to evoke the intended character of the proposed plant screening for the new Meltzer Center. Their depiction of the new building and plantings is only conceptual and artistic. They should not be construed as any type of guarantee of horticultural success. Nor are they meant to promise any particular rate of growth for the new plants. The actual growth rate will depend on a variety of factors outside of the University's and designer's control such as regional weather patterns and precipitation, soil biology, specific genetic attributes of each plant specimen and microclimates arising from the surrounding plant community. The University may selectively prune existing brush and tree branches for safety, access or plant health, and the actual placement of new plant specimens may be field adjusted by University representatives in order to limit damage of existing roots or to optimize visual screening.



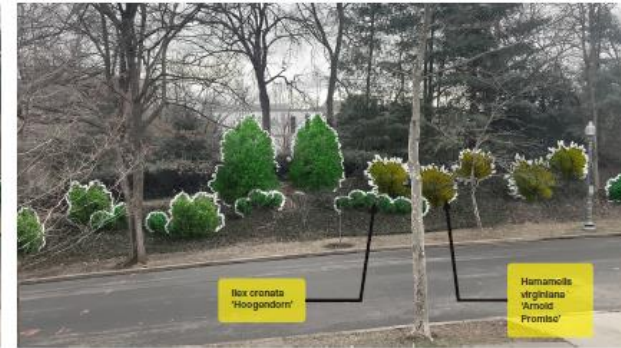
3-a Looking Towards the Plant Buffer from 3730 University Ave NW Existing Condition

3-b Looking Towards the Plant Buffer from 3730 University Ave NW After Planting & Meltzer Center Construction

3-c Looking Towards the Plant Buffer from 3730 University Ave NW 5-7 Years After Planting & Meltzer Center Construction

RENDERED VIEWS 4

These illustrations are meant to evoke the intended character of the proposed plant screening for the new Meltzer Center. Their depiction of the new building and plantings is only conceptual and artistic. They should not be construed as any type of guarantee of horticultural success. Nor are they meant to promise any particular rate of growth for the new plants. The actual growth rate will depend on a variety of factors outside of the University's and designer's control such as regional weather patterns and precipitation, soil biology, specific genetic attributes of each plant specimen and microclimates arising from the surrounding plant community. The University may selectively prune existing brush and tree branches for safety, access or plant health, and the actual placement of new plant specimens may be field adjusted by University representatives in order to limit damage of existing roots or to optimize visual screening.



4-a Looking Towards the Plant Buffer from 3724 University Ave NW Existing Condition

4-b Looking Towards the Plant Buffer from 3724 University Ave NW After Planting & Meltzer Center Construction

4-c Looking Towards the Plant Buffer from 3724 University Ave NW 5-7 Years After Planting & Meltzer Center Construction

RENDERED VIEWS 13

These illustrations are meant to evoke the intended character of the proposed plant screening for the new Meltzer Center. Their depiction of the new building and plantings is only conceptual and artistic. They should not be construed as any type of guarantee of horticultural success. Nor are they meant to promise any particular rate of growth for the new plants. The actual growth rate will depend on a variety of factors outside of the University's and designer's control such as regional weather patterns and precipitation, soil biology, specific genetic attributes of each plant specimen and microclimates arising from the surrounding plant community. The University may selectively prune existing brush and tree branches for safety, access or plant health, and the actual placement of new plant specimens may be field adjusted by University representatives in order to limit damage of existing roots or to optimize visual screening.



13-a Looking Towards the Plant Buffer from Meltzer Center Existing Condition



13-b Looking Towards the Plant Buffer from Meltzer Center After Planting & Meltzer Center Construction



13-c Looking Towards the Plant Buffer from Meltzer Center 5-7 Years After Planting & Meltzer Center Construction

- 4/4: Steering Committee meeting.
- 4/10: Filing of FPA.
- **4/25:** FPWG meeting.
- **5/30:** FPWG meeting.
- **June:** Seeking formal ANC approval prior to ZC hearing.

Updates

- Zoning Order is still pending.
- The permitting process is underway.
- The new NOR139 sound meter has been received and training is underway.
- A location for future sound monitoring has been proposed by Miller Beam.
- The draft checklist is being updated.
- Sourcing of landscape plantings is underway.



Other Facilities Related Open Floor Discussion



Closing Comments and Adjourn