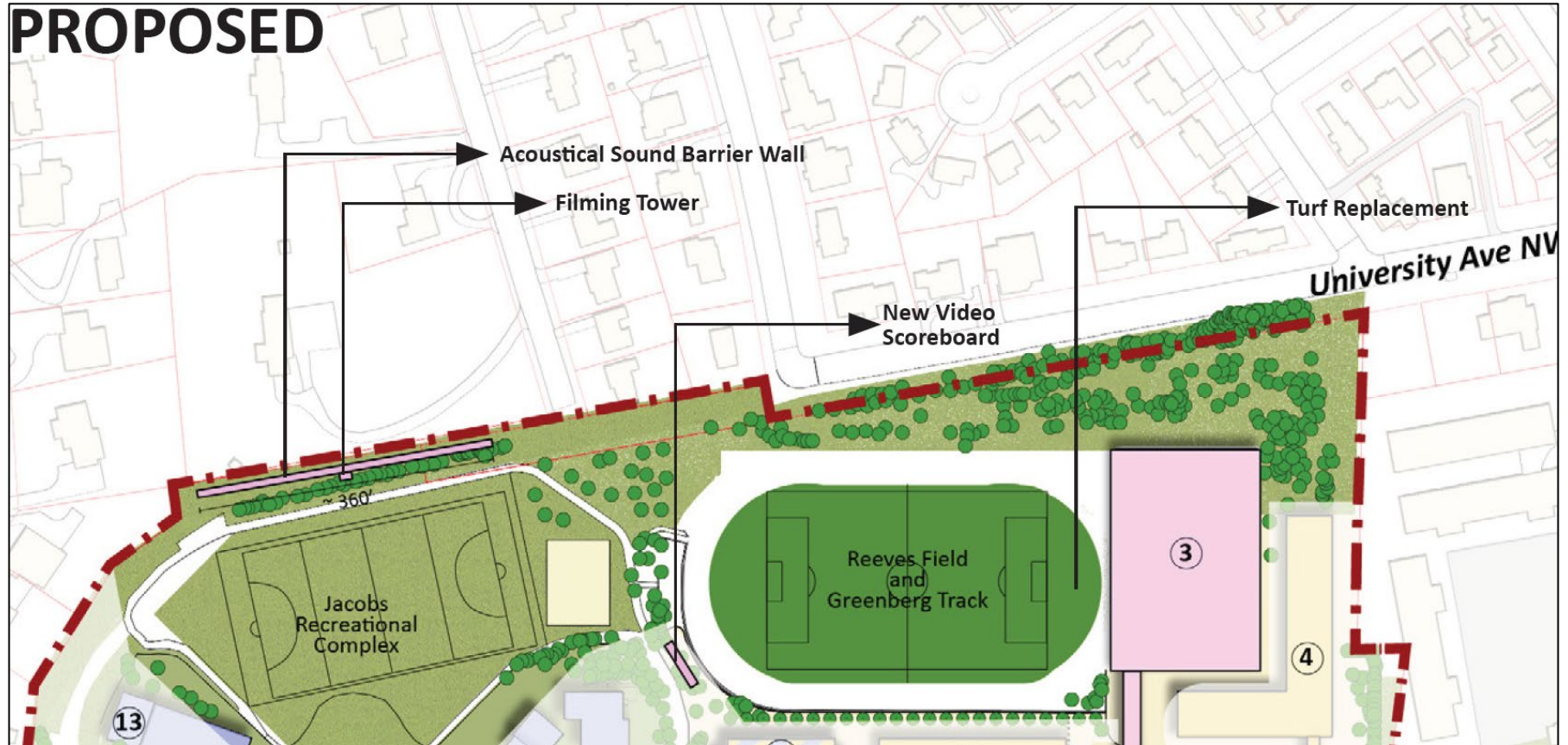




AMERICAN UNIVERSITY
WASHINGTON, DC

Jacob's Field Sound Barrier Wall

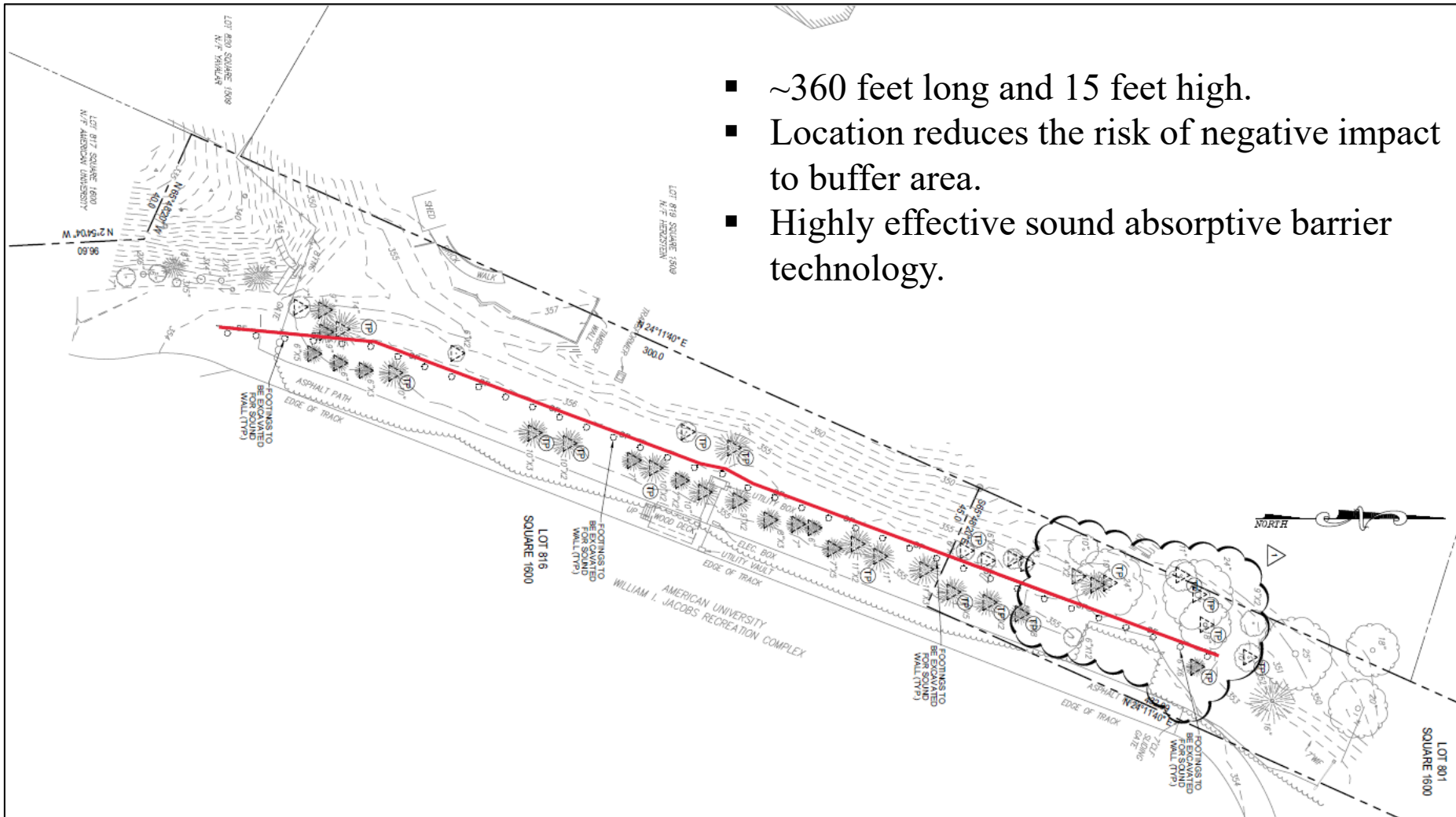
PROPOSED





Jacob's Field Sound Barrier

- ~360 feet long and 15 feet high.
- Location reduces the risk of negative impact to buffer area.
- Highly effective sound absorptive barrier technology.



Jacob's Field Sound Barrier





AMERICAN UNIVERSITY
WASHINGTON, DC

Reeves Field Scoreboard Replacement

Existing Scoreboard



New Scoreboard



- **The new scoreboard will be the same size and at the same elevation as the existing scoreboard.**
- **The new scoreboard will use the existing structural steel.**
- **The scoreboard will not face the neighborhood.**
- **As is the case with the existing Reeves Field scoreboard, the only sound that will be generated by the new scoreboard will be for clock starts and stops, substitutions, and end of half.**