



AMERICAN UNIVERSITY  
WASHINGTON, DC

Capital Projects Update  
September 17, 2018

# Hall of Science

- Progress
  - Mobilization
  - Clearing and securing site
  - Underground utilities
  - Sheeting and shoring
  - Excavation
- 3 Month Look Ahead
  - Tower crane installation
  - Foundations and below slab utilities
  - Building structure



# Hall of Science



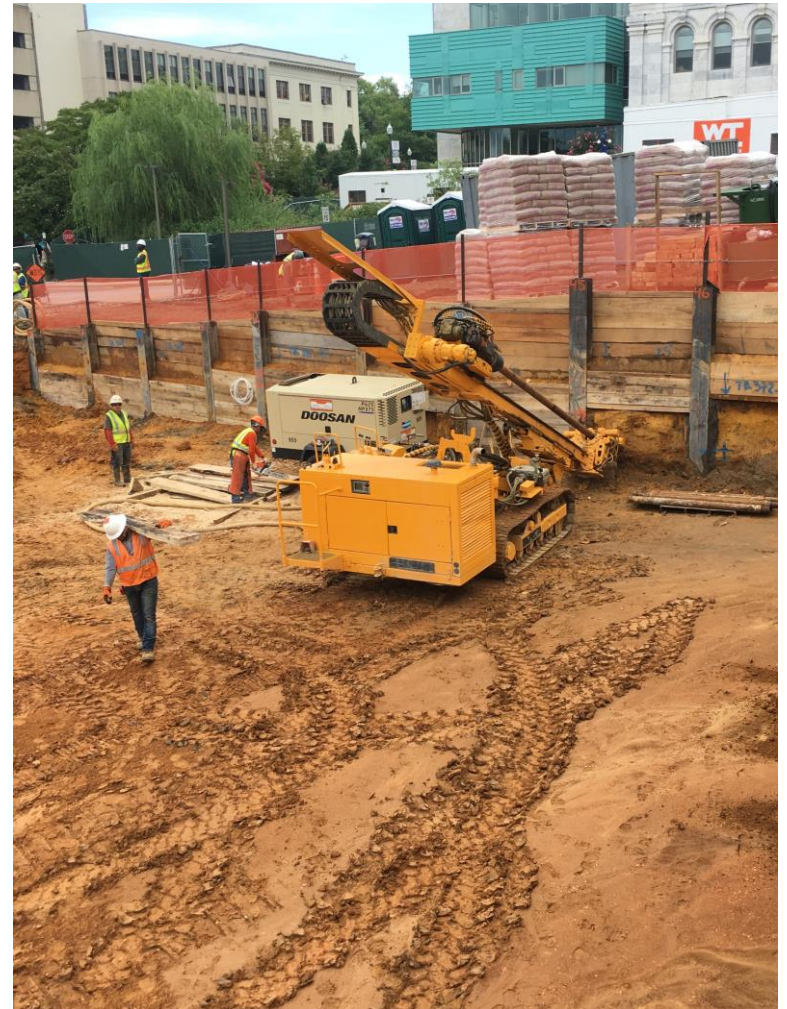
**Soldier Pile Installation**





# Hall of Science

## Excavation



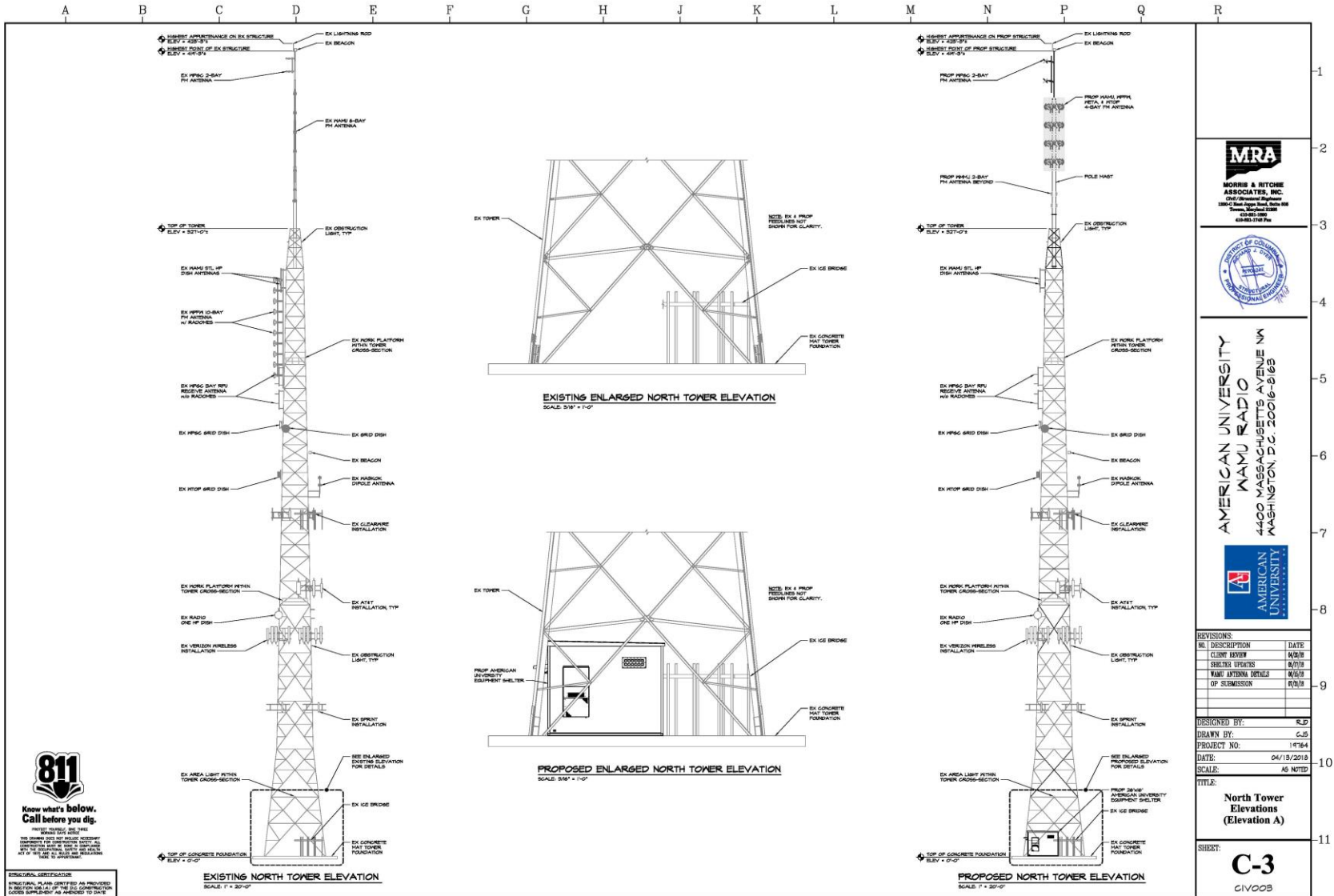


# Hall of Science

Progress Photographs June – August 2018



# WAMU Radio Tower



**811**  
 Know what's below.  
 Call before you dig.  
 1-800-4-A-SHIELD  
 THE NUMBER DOES NOT RELATE TO ANY OTHER SERVICE PROVIDER. CALL THE APPROPRIATE AGENCY TO VERIFY THE LOCATION OF UTILITIES BEFORE YOU DIG. CALL 811 AT LEAST 48 HOURS BEFORE YOU DIG. VISIT WWW.811.NC.GOV FOR MORE INFORMATION.

**REGISTRATION CERTIFICATION:**  
 PROFESSIONAL PLANS PREPARED BY AN ARCHITECT OR ENGINEER PURSUANT TO THE REGISTRATION LAWS OF THE DISTRICT OF COLUMBIA. THIS DOCUMENT IS NOT VALID UNLESS IT BEARS THE SIGNATURE AND SEAL OF A REGISTERED PROFESSIONAL ENGINEER OR ARCHITECT.

**MRA**  
 MORRIS & RITCHIE  
 ASSOCIATES, INC.  
 1200 Connecticut Avenue, N.W.  
 Suite 2000  
 Washington, D.C. 20036-5008  
 (202) 462-7000

**AMERICAN UNIVERSITY**  
 WAMU RADIO  
 4400 MASSACHUSETTS AVENUE NW  
 WASHINGTON, D.C. 20064-5038

**AMERICAN UNIVERSITY**

1  
2  
3  
4  
5  
6  
7  
8  
9  
10  
11