

NEBRASKA HALL



The three-story addition to be built on Nebraska Hall, located along Nebraska Ave., will be constructed on the north end of the existing building on the site of the surface parking lot. The addition will relate to the existing building in height and outward appearance. Construction, now in progress, is expected to be completed by August of 2013.

For the most up-to-date information about Nebraska Hall construction, other building projects, and notice of any possible, temporary impact they may have on the community, be sure to visit the “Building AU” website (<http://www.american.edu/buildingAU/>).

During the construction process, there may be temporary inconveniences that occasionally affect our neighbors and the university community. We will always strive to minimize the impact of our construction activity.

Rules of Construction

The university will minimize the impact of construction activity by:

- appointing a university staff liaison to address concerns and answer questions;
- establishing a 24-hour construction contractor telephone contact for reporting problems and establishing a process for timely response;
- conducting preconstruction inspections (including a photographic record) of nearby properties to establish a baseline for assessing potential construction-related damage and establishing a process for handling damage claims expeditiously and fairly;
- holding a preconstruction community meeting with construction managers to coordinate planned construction activities at least 90 days before construction;
- limiting construction work to 7:30 a.m. to 4 p.m., Mon. through Fri.; interior work not creating an impact on neighboring residences may take place outside these hours; and
- prohibiting construction traffic and construction worker parking on residential streets.

Contacts

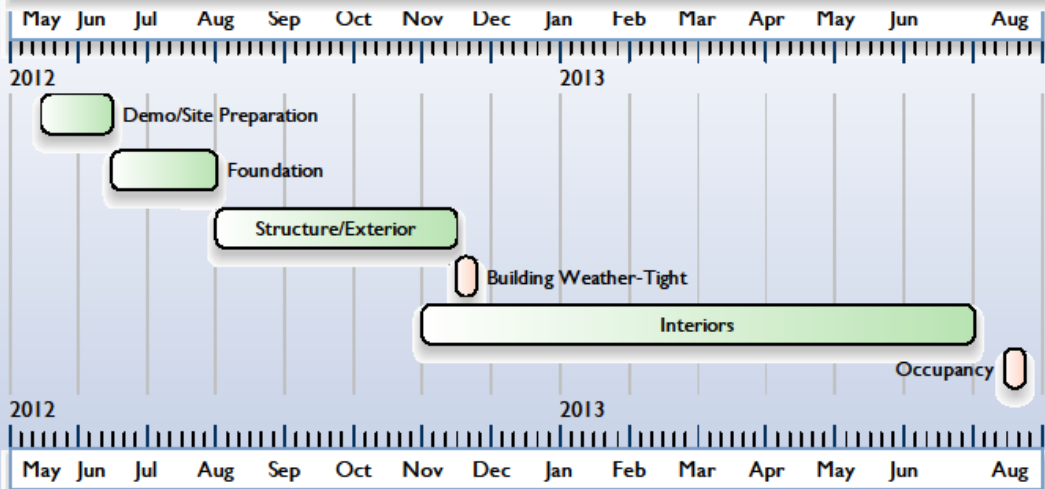
Tony Esse, American University, Construction Manager, esse@american.edu, (202) 556-9763

Mike Davis, Grunley Construction, Project Manager (on-site), mikedavis@grunley.com, (240) 388-6562

Dan Hanlon, American University, Dir. Construction Mgmt., ghanlon@american.edu, (202) 885-1169
(cell) (202) 277-4264

Emergency, American University, Public Safety (202) 885-3636

Nebraska Hall Addition Schedule



As of May 2012