



**2011 Campus Plan Community  
Task Force**

**February 23, 2010**



1. Introductions
2. Review Population
3. Housing
4. Density – Floor Area Ratio
5. Other



### **February 2010**

- Review housing needs
- Review transportation issues
- Review density measures

### **March 2010**

- Discuss specific projects
- Update Neighborhood Liaison Committee

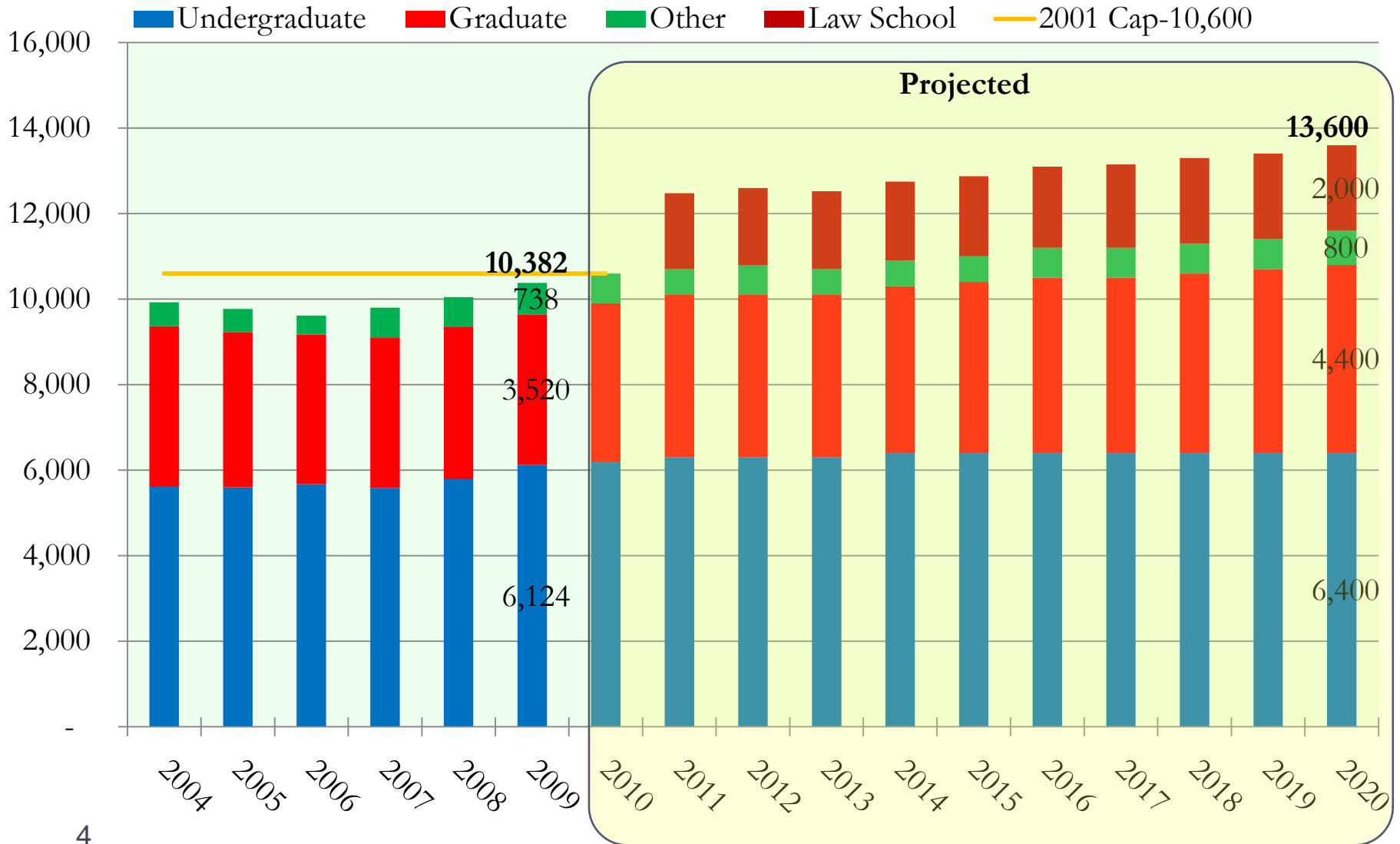
### **April 2010**

- Present and discuss overall plan



# AMERICAN UNIVERSITY

## Student Population & Projections 2004-2020 w/ Law School





## Facilities Priorities to Support Goals

- Undergraduate student housing
- Recreation, dining, activity space
- New law school facility
- Additional faculty offices
- Improved science instruction and research facilities
- Additional athletic facilities
- Welcome Center
- Alumni Center



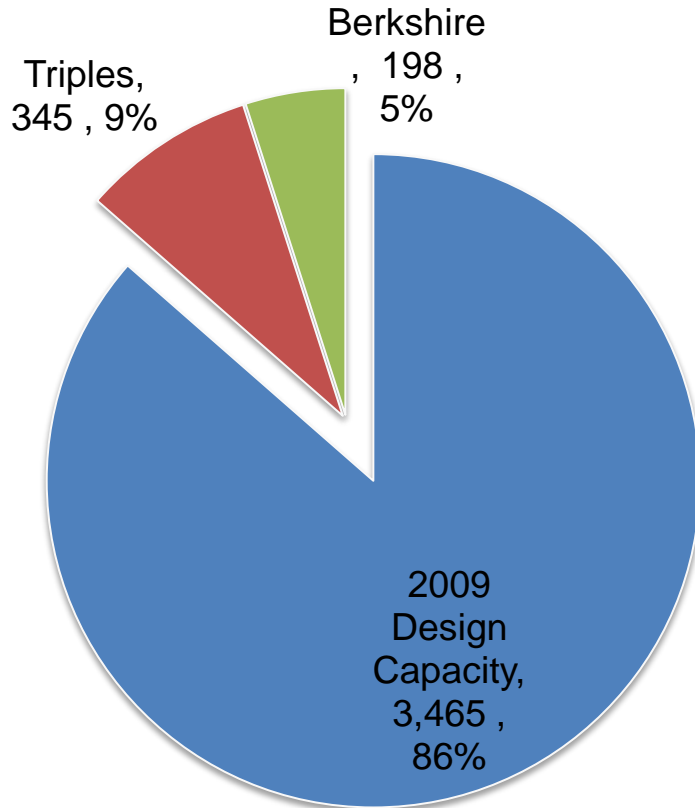
Housing Need

Current Design Capacity	3,465
Triples	345
Berkshire	200
Actual Capacity	<u>4,008</u>
2009 Campus Plan Requirement	4,079
2020 Campus Plan Requirement	4,262
Demand Estimate	4,900
Proposed Housing Capacity	4,600



## Housing

**2009**

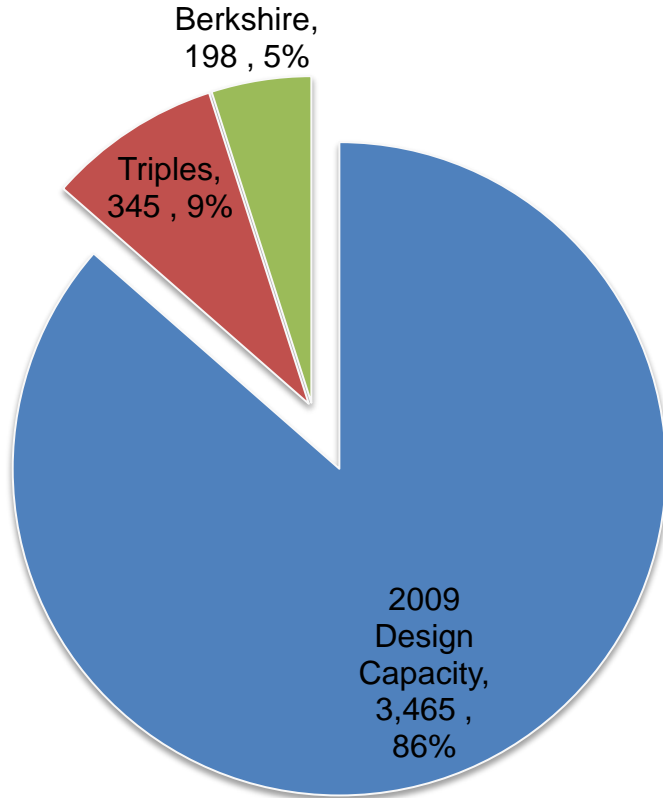


**Total 4,008**



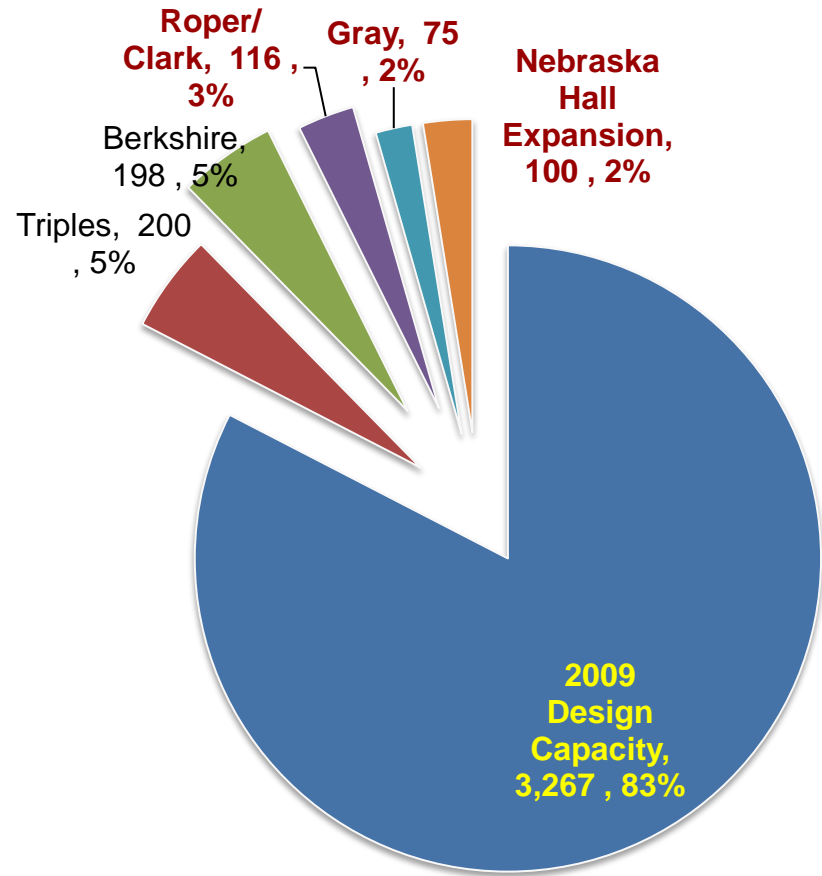
## Housing

2009



Total 4,008

2012



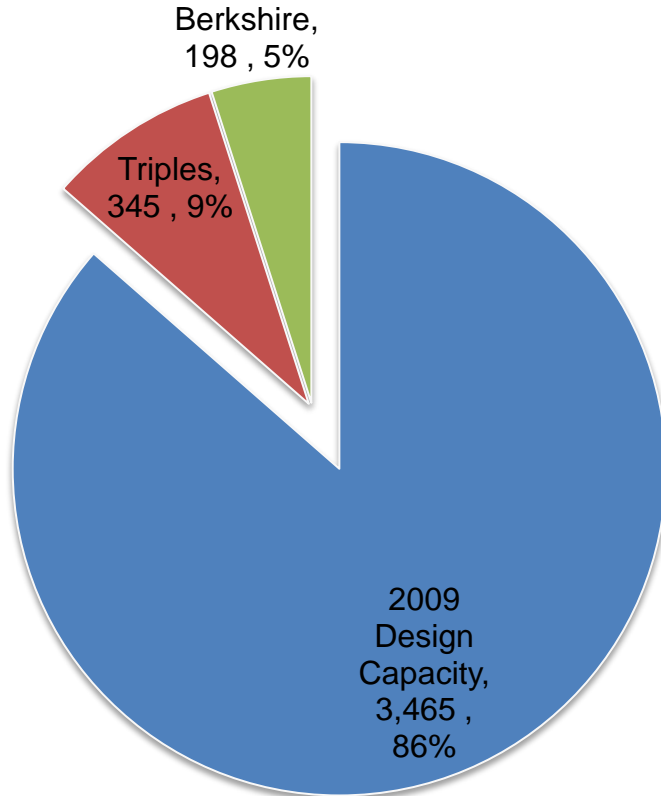
Total 3,956





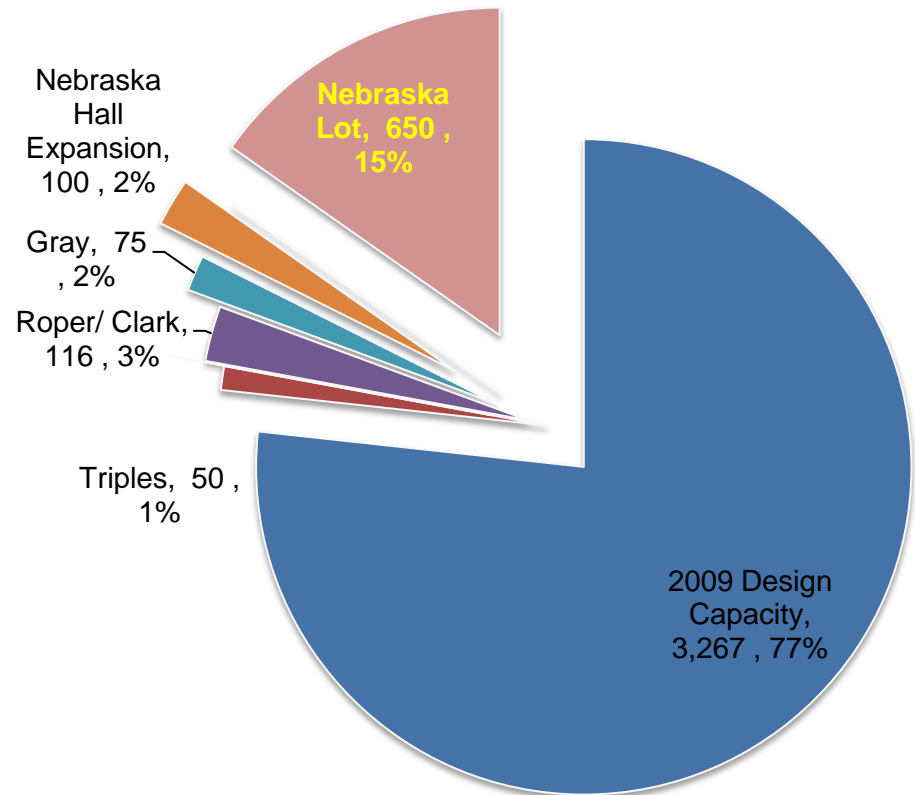
## Housing

2009



Total 4,008

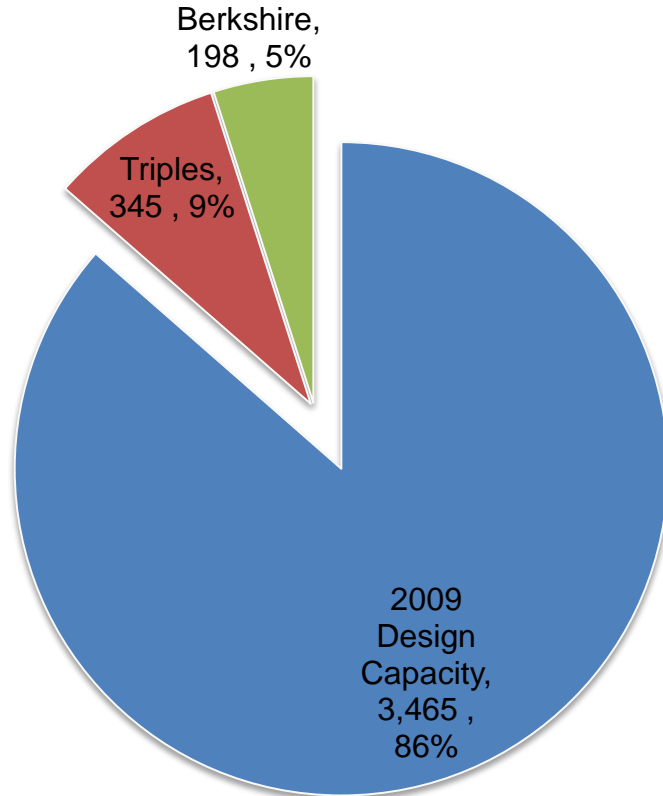
2014



Total 4,258

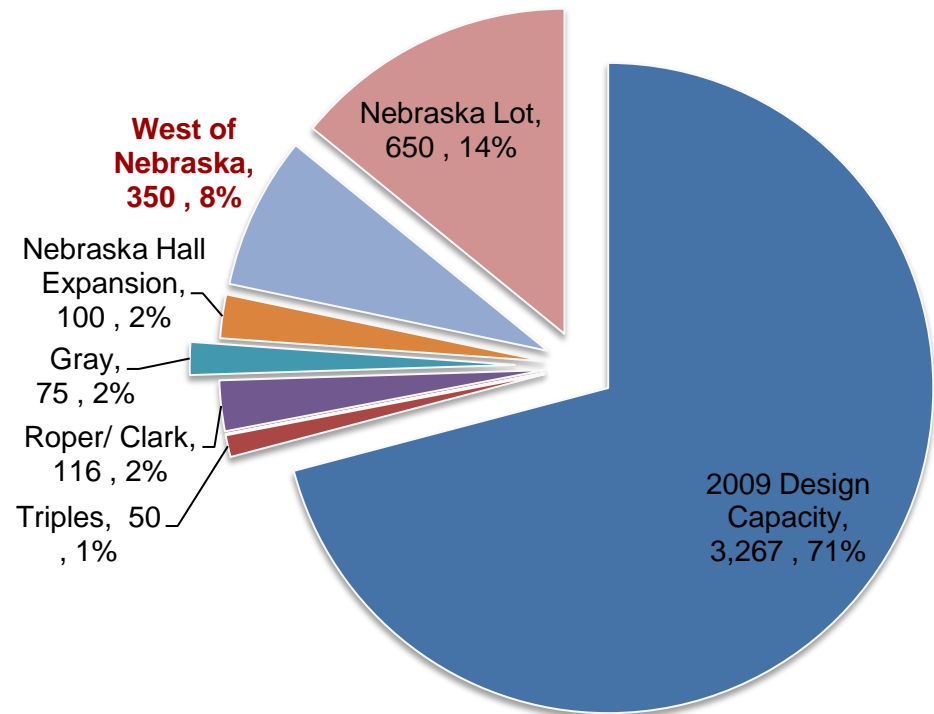


2009



Total 4,008

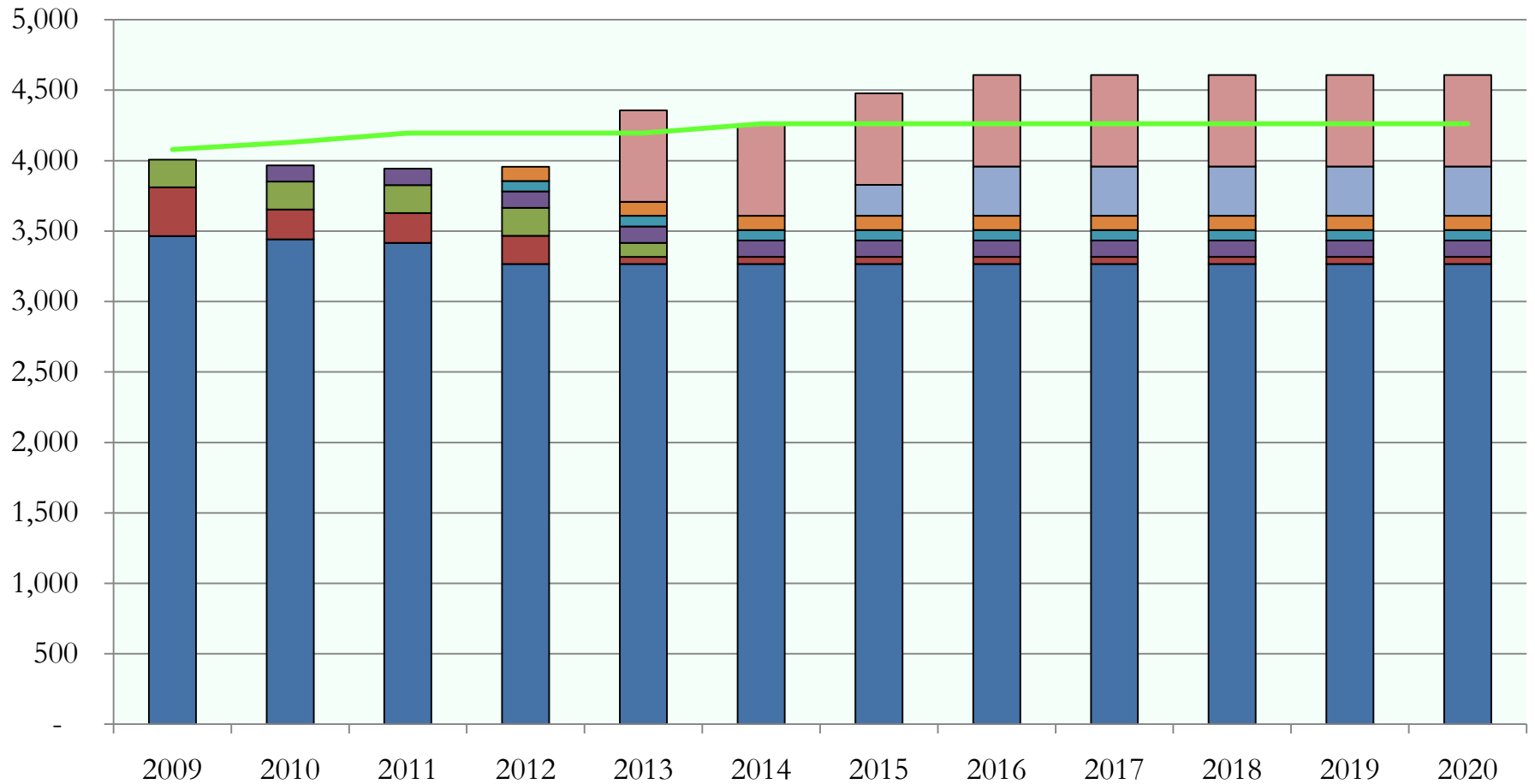
2020



Total 4,608



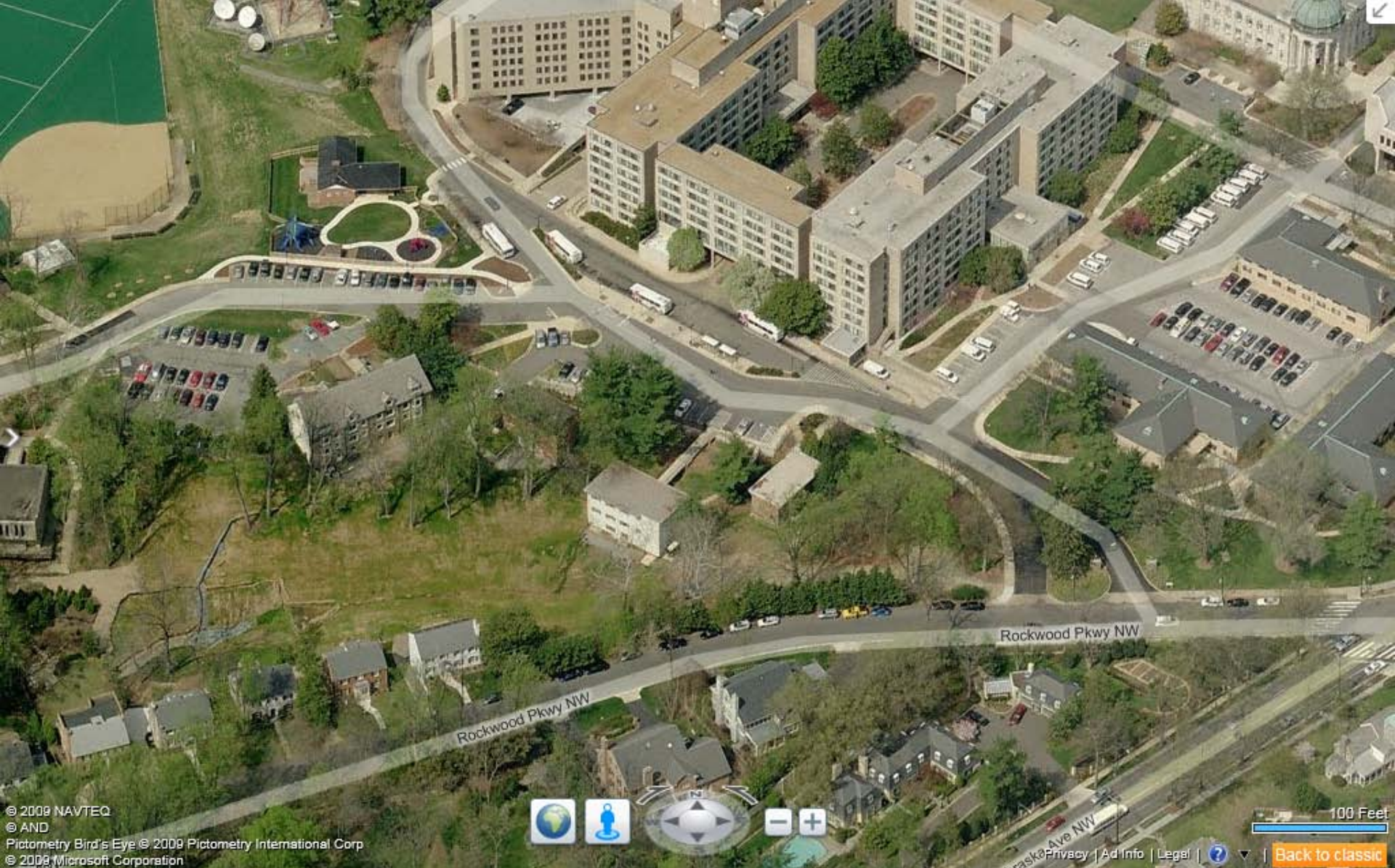
## Housing





## Next Steps

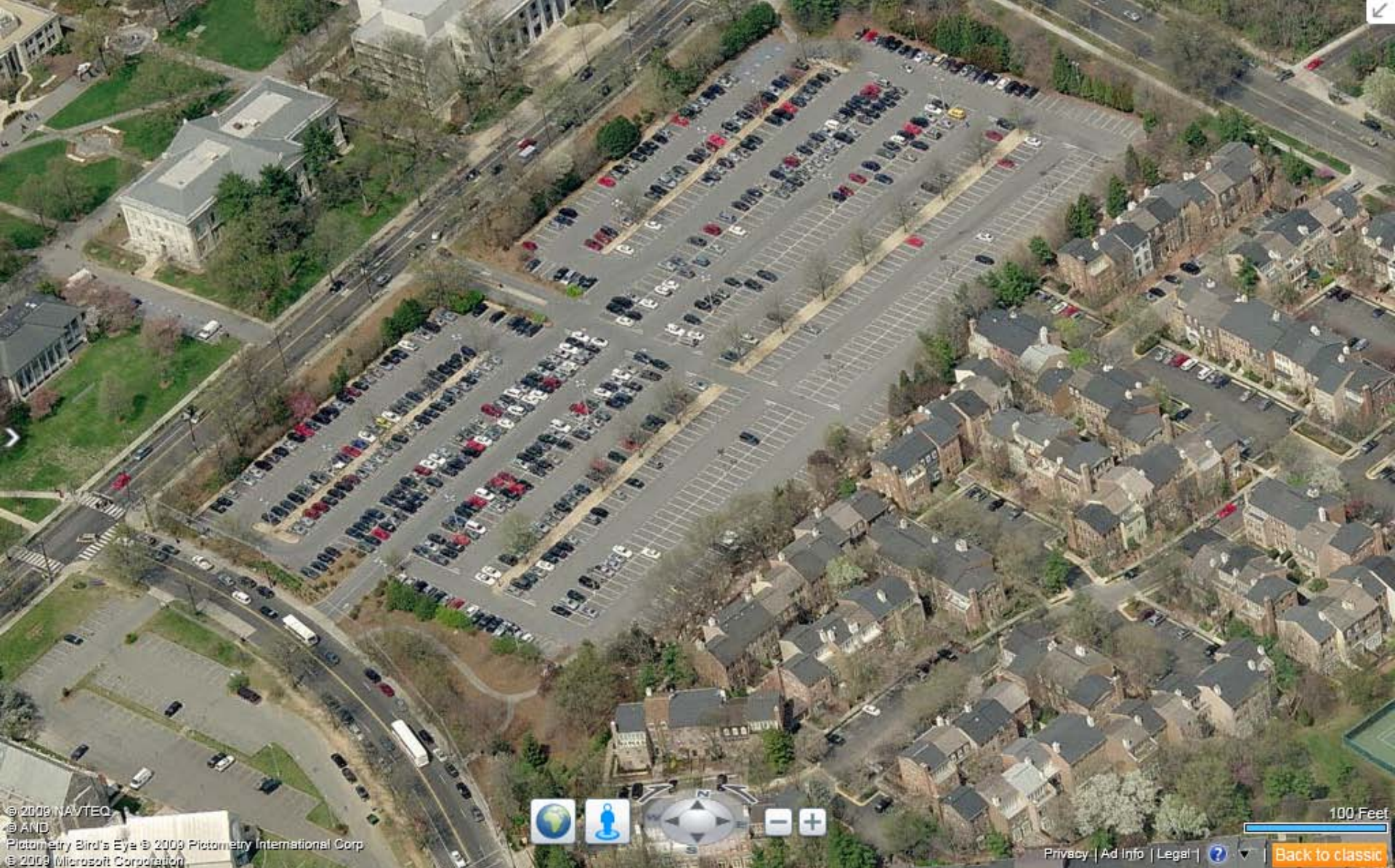
- Finalize unit mix
- Develop typical floor plates
- Test sites



© 2009 NAVTEQ  
© AND  
Pictometry Bird's Eye © 2009 Pictometry International Corp  
© 2008 Microsoft Corporation



100 Feet  
[Back to classic](#)



© 2008 NAVTEQ  
© AND  
Pictometry Bird's Eye © 2009 Pictometry International Corp  
© 2008 Microsoft Corporation

100 Feet

[Privacy](#) | [Ad Info](#) | [Legal](#) | [?](#) | [Back to classic](#)



American University  
440 Massachusetts Avenue, NW  
Washington DC 20016-8200

Project  
**AMERICAN  
UNIVERSITY  
CAMPUS PLAN  
2011**



McKissick McKissick  
1401 New York Avenue, NW  
Suite 900  
Washington DC 20005

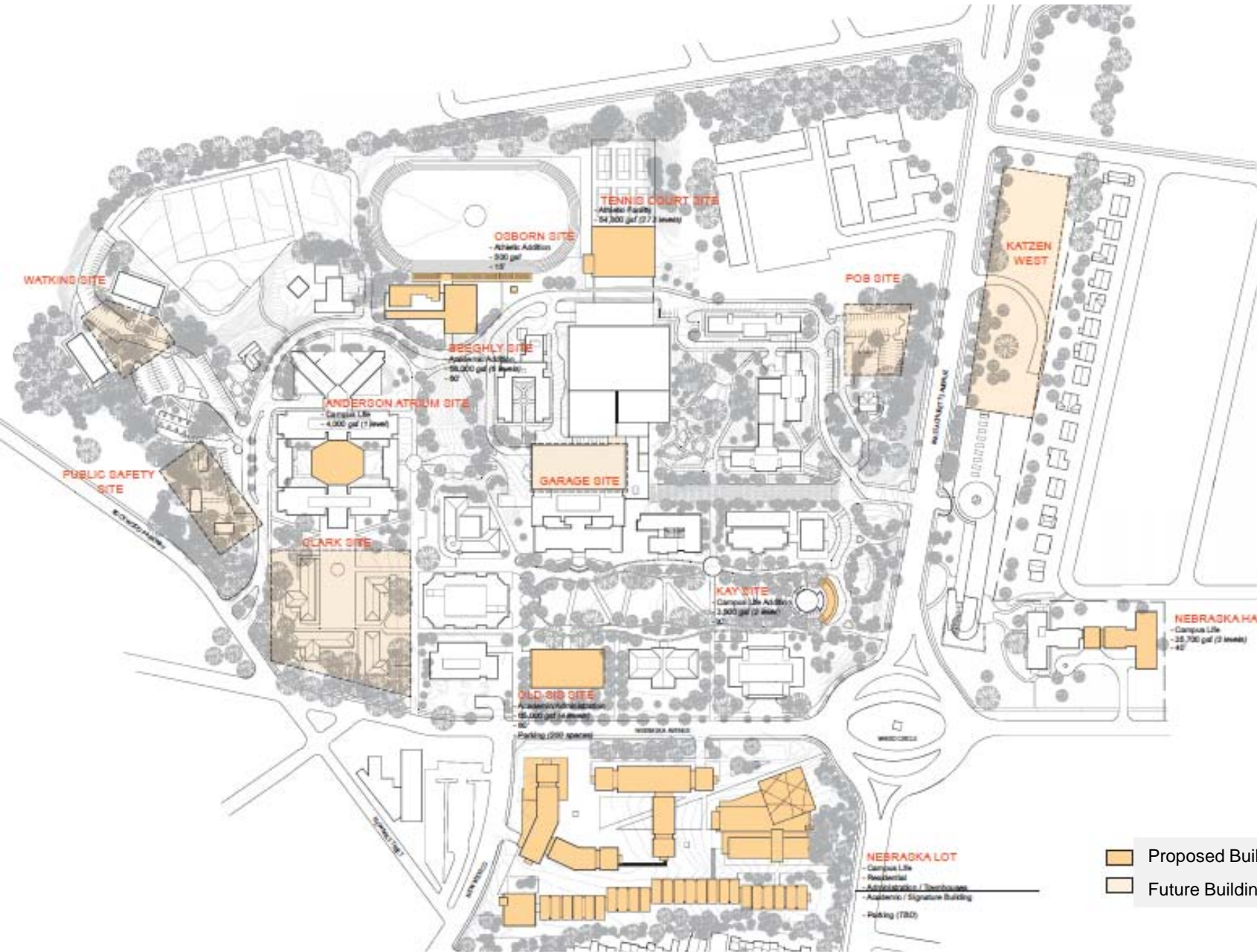
Date  
January 26, 2010

Scale  
N.T.S.

Drawing Name

PROPOSED BUILDING

- Proposed Building Sites
- Future Building Sites



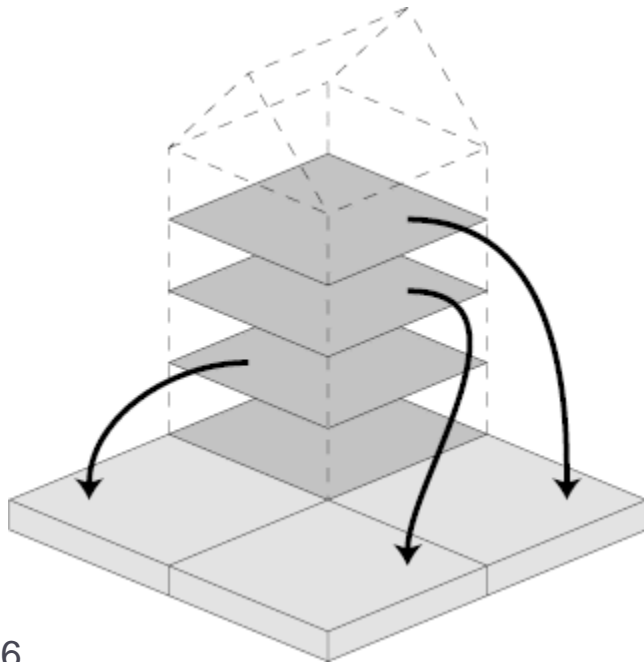


# Floor Area Ratio

Total Building Floor Area

---

Total Land Area



<http://www.carfree.com/far.html>





Building Density

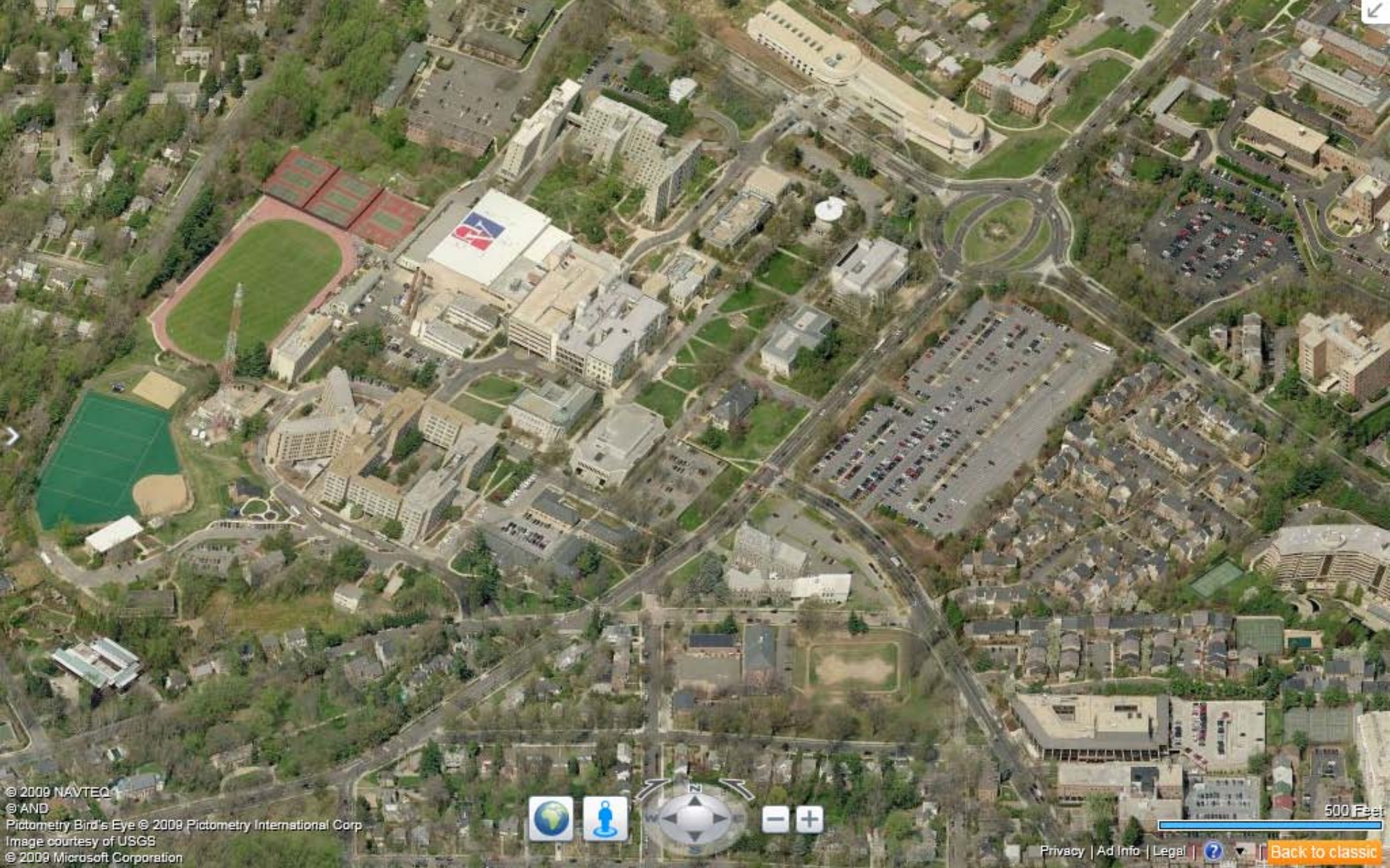
Total Building Floor Area – Main Campus	1,703,713
Total Building Floor Area – Main Campus	171,358
Total Building Floor Area	1,875,071
Total Land Area – Main Campus	3,296,488
Total Land Area – Tenley Campus	355,911
Total Land Area	3,652,911

**Existing Floor Area Ratio .5**



Building Density

Total Land Area	3,652,911
Allowable Floor Area Ratio	1.8
Allowable Floor Area	<u>6,574,318</u>
Existing Building Area	1,875,071
Potential Future Development	<u>1,200,000</u>
Potential Future Floor Area	3,075, 071
Potential Future Floor Area Ratio	.8



© 2009 NAVTEQ  
© AND  
Pictometry Bird's Eye © 2009 Pictometry International Corp  
Image courtesy of USGS  
© 2009 Microsoft Corporation

Privacy | Ad Info | Legal | [?](#) [Back to classic](#)

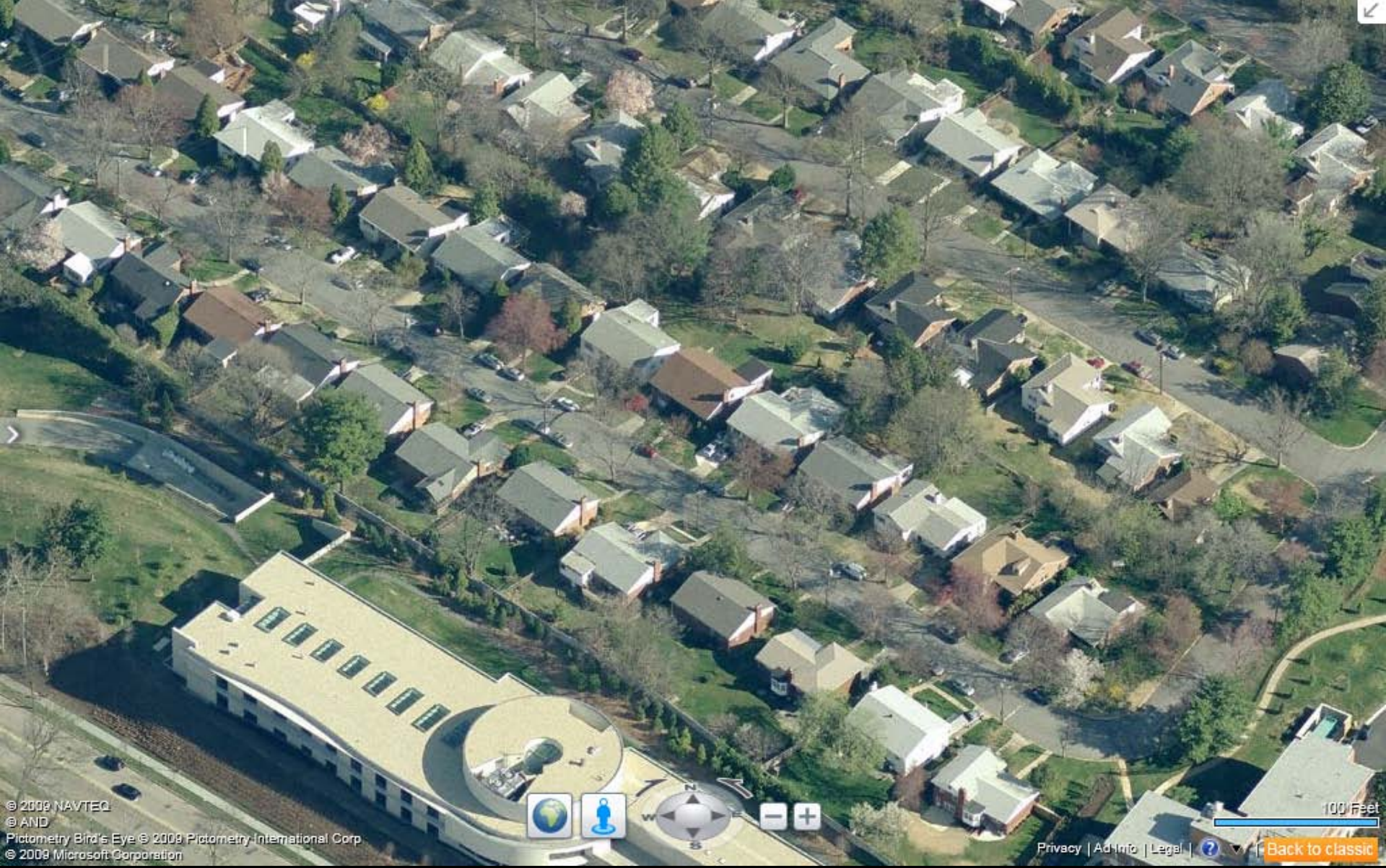


© 2009 NAVTEQ  
© AND  
Pictometry, Bird's Eye © 2009 Pictometry International Corp  
© 2009 Microsoft Corporation



[Privacy](#) | [Ad Info](#) | [Legal](#) | [?](#)

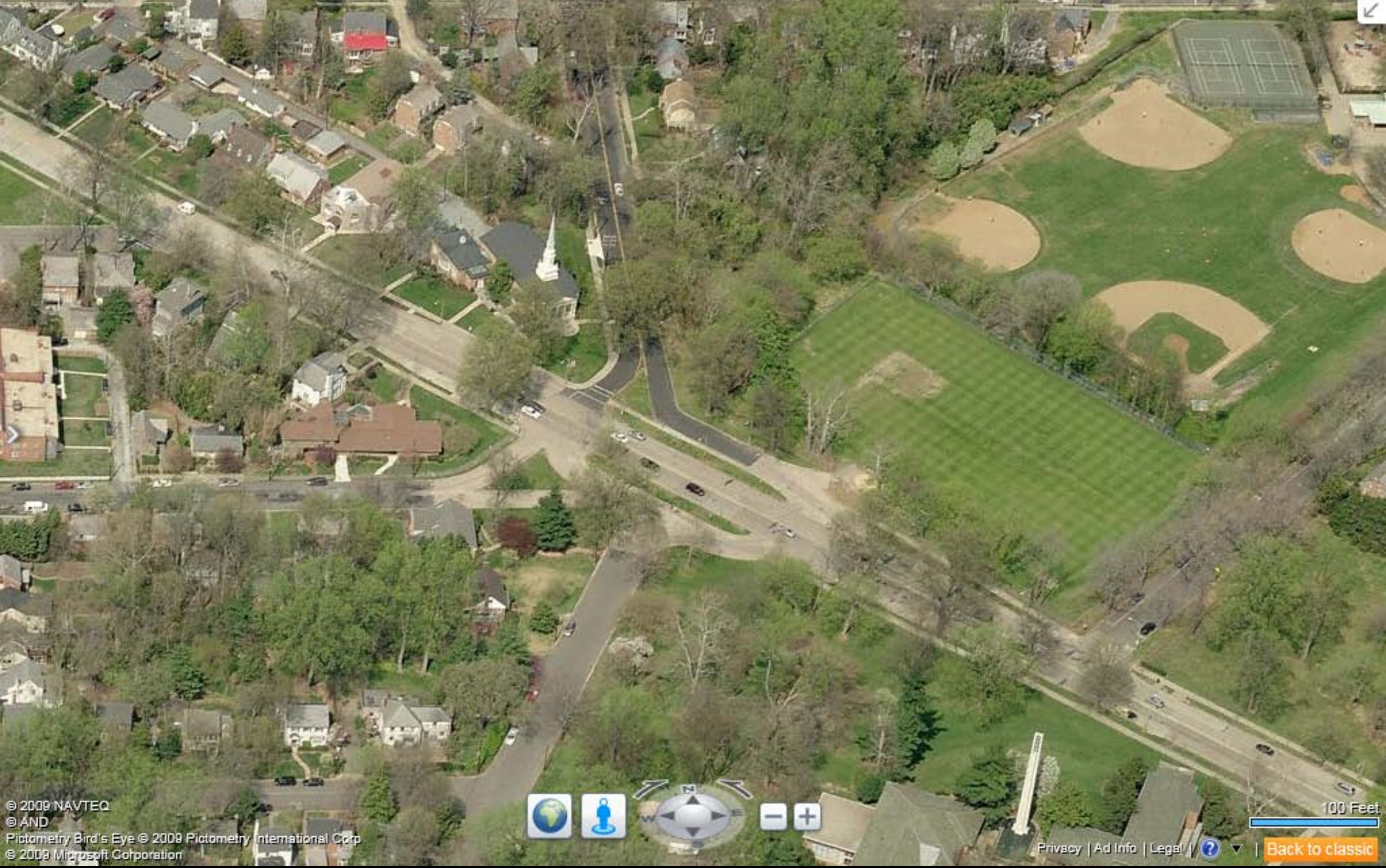
[Back to classic](#)



© 2009 NAVTEQ  
© AND  
Pictometry Bird's Eye © 2009 Pictometry International Corp  
© 2009 Microsoft Corporation



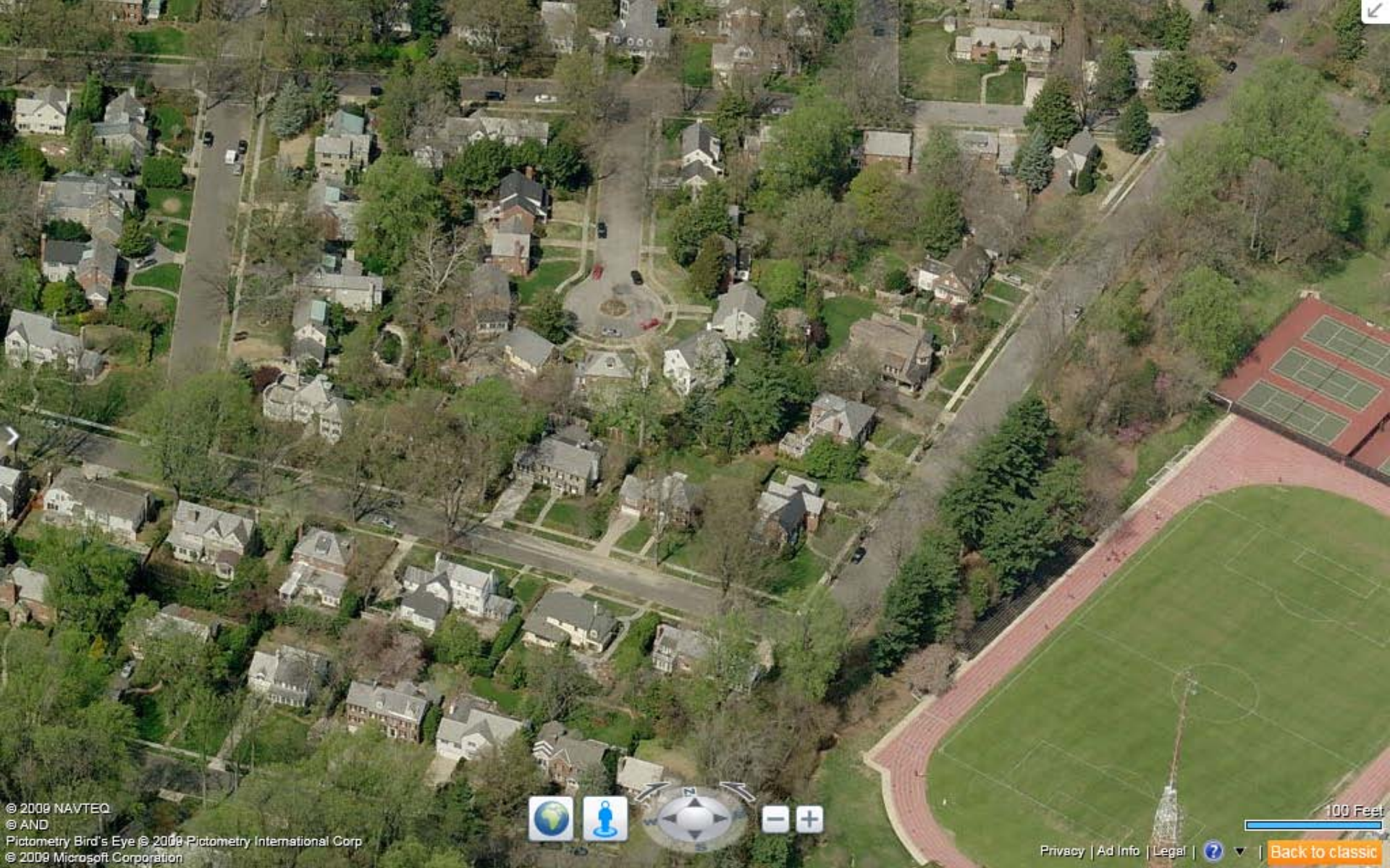
100 Feet  
Privacy | Ad Info | Legal | ? | [Back to classic](#)



© 2009 NAVTEQ  
© AND  
Pictometry Bird's Eye © 2009 Pictometry International Corp  
© 2009 Microsoft Corporation



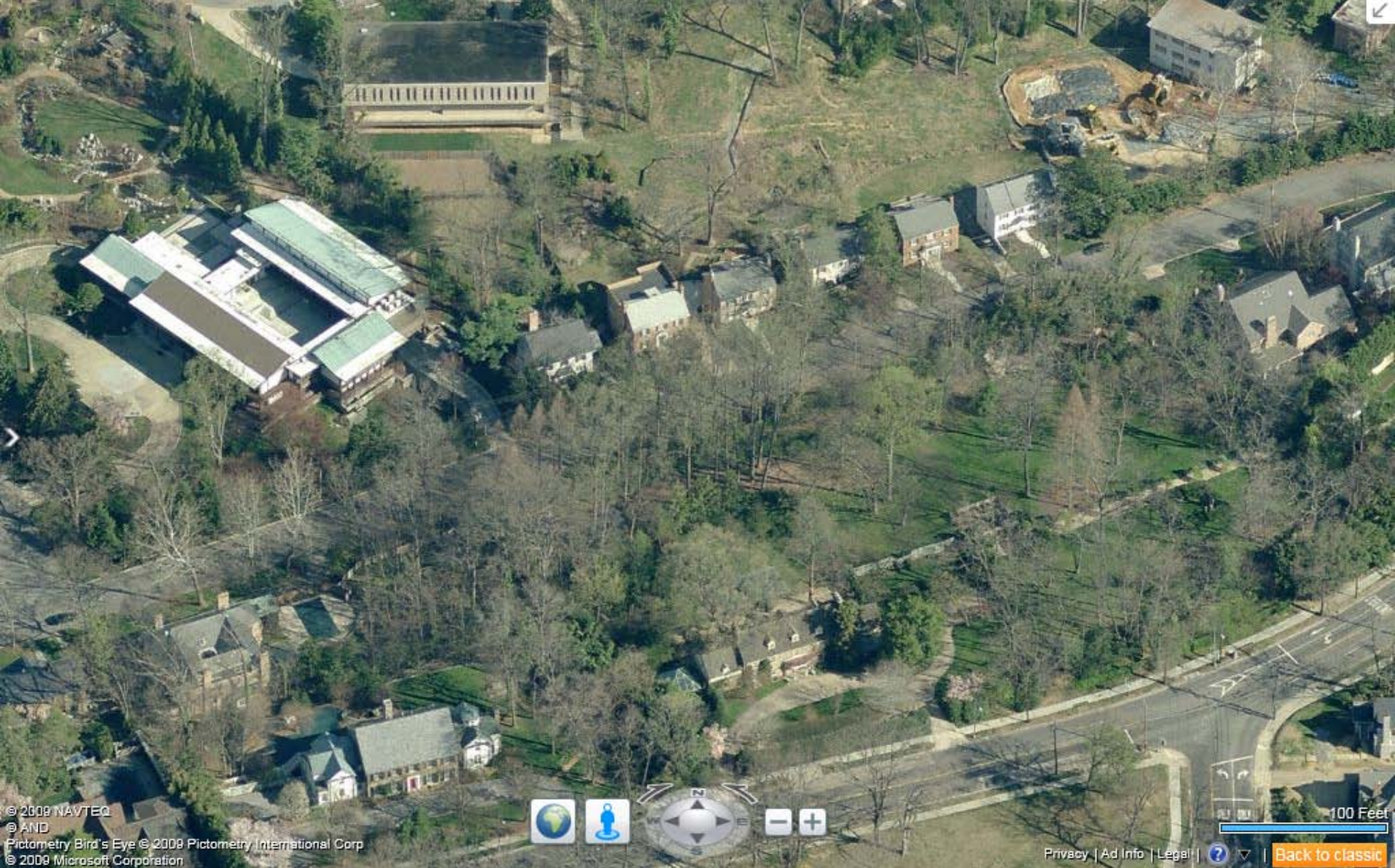
100 Feet  
Privacy | Ad Info | Legal | ? | [Back to classic](#)



© 2009 NAVTEQ  
© AND  
Pictometry Bird's Eye © 2009 Pictometry International Corp  
© 2009 Microsoft Corporation



100 Feet  
[Privacy](#) | [Ad Info](#) | [Legal](#) | [?](#) | [Back to classic](#)

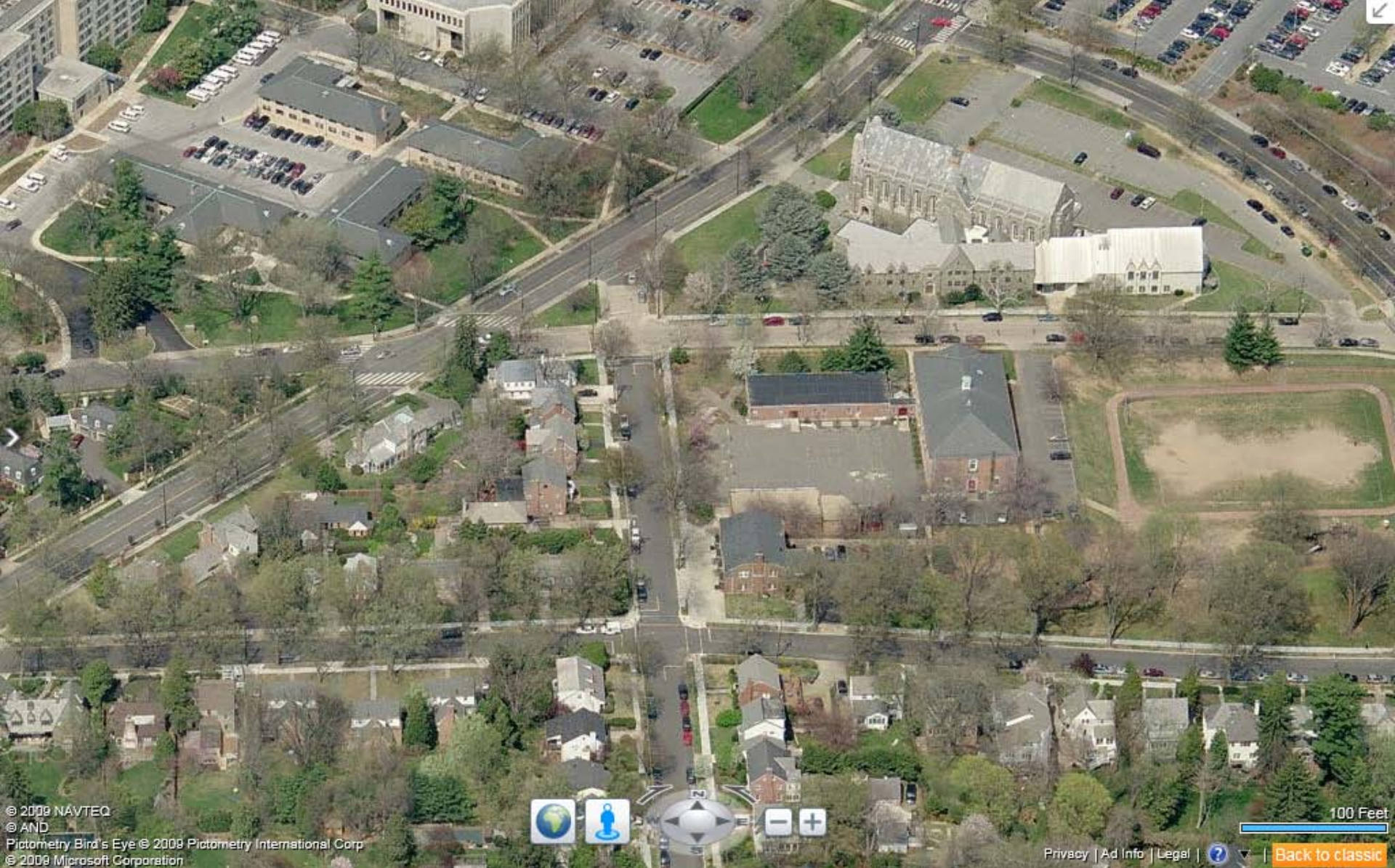


© 2009 NAVTEQ  
© AND  
Pictometry Bird's Eye © 2008 Pictometry International Corp  
© 2009 Microsoft Corporation



100 Feet  
Privacy | Ad Info | Legal | | [Back to classic](#)





© 2009 NAVTEQ  
© AND  
Pictometry Bird's Eye © 2009 Pictometry International Corp  
© 2009 Microsoft Corporation



100 Feet  
[Privacy](#) | [Ad Info](#) | [Legal](#) | [?](#) | [Back to classic](#)

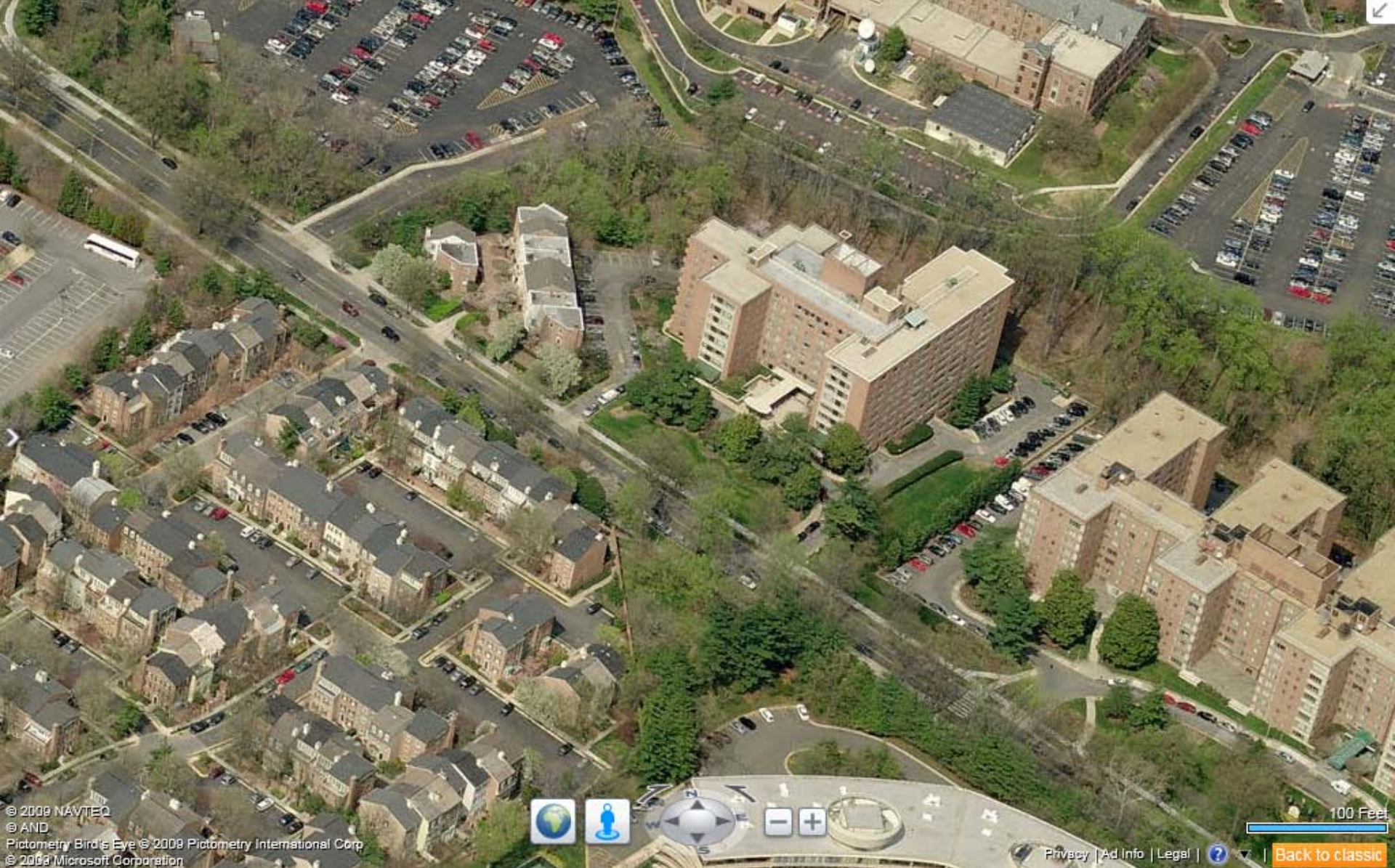


© 2009 NAVTEQ  
© AND  
Pictometry Bird's Eye © 2009 Pictometry International Corp  
© 2009 Microsoft Corporation



100 Feet

[Privacy](#) | [Ad info](#) | [Legal](#) | [?](#) | [Back to classic](#)



© 2009 NAVTEQ  
© AND  
Pictometry Bird's Eye © 2009 Pictometry International Corp  
© 2009 Microsoft Corporation



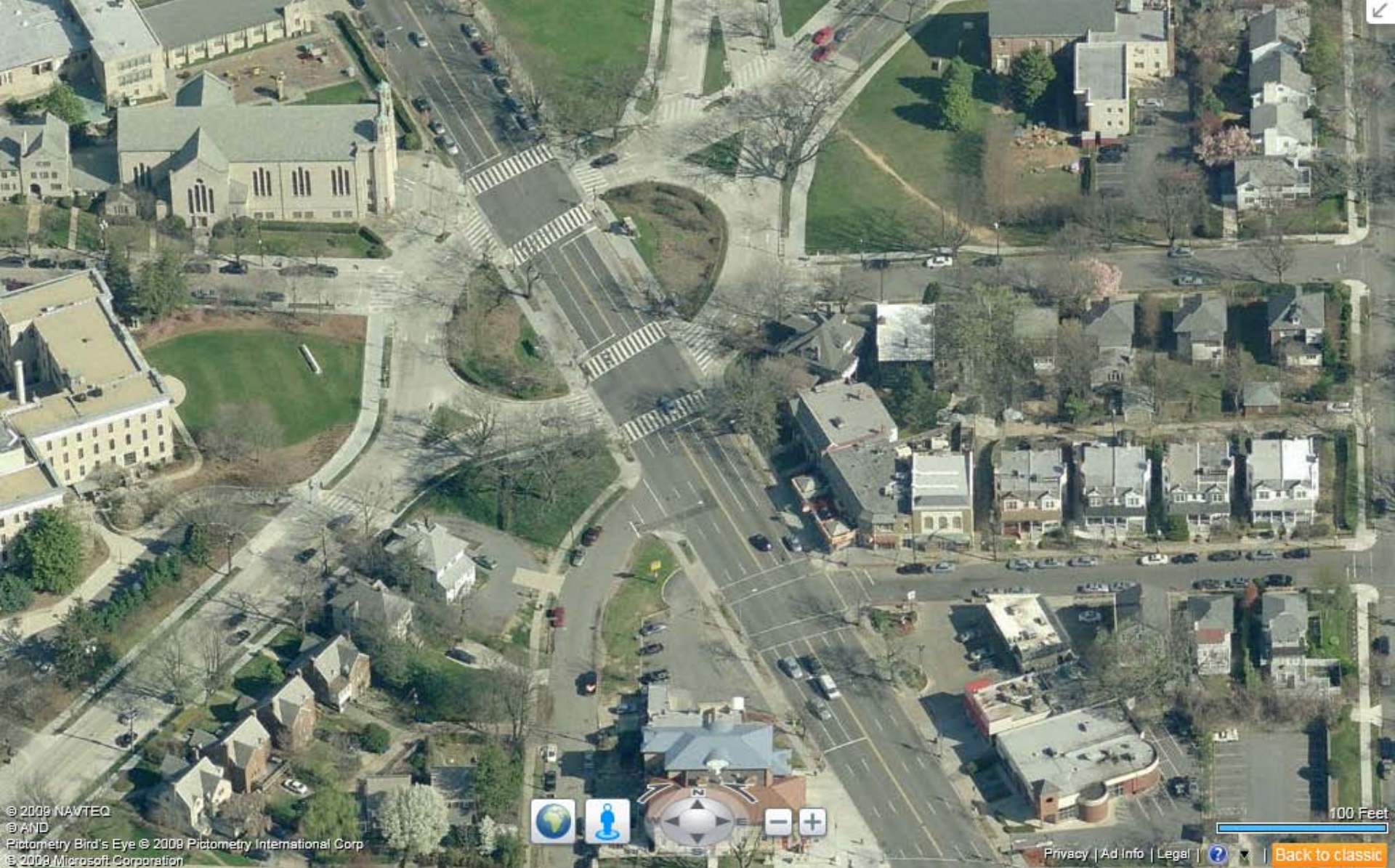
100 Feet

[Privacy](#) | [Ad Info](#) | [Legal](#) | [?](#) | [Back to classic](#)



© 2009 NAVTEQ  
© AND  
Pictometry Bird's Eye © 2008 Pictometry International Corp  
© 2009 Microsoft Corporation

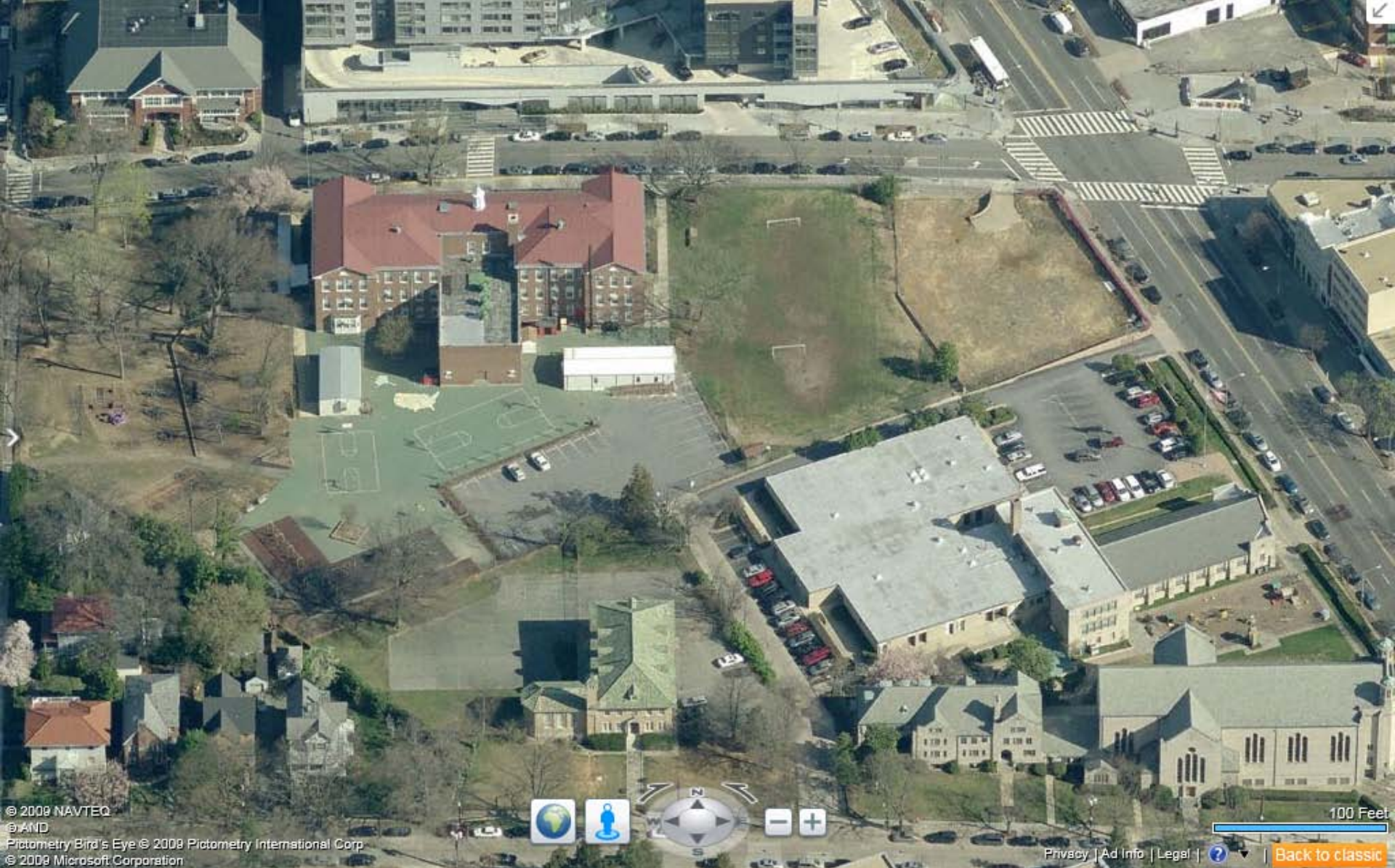
Privacy | Ad Info | Legal | | [Back to classic](#)



© 2009 NAVTEQ  
© AND  
Pictometry Bird's Eye © 2009 Pictometry International Corp  
© 2009 Microsoft Corporation

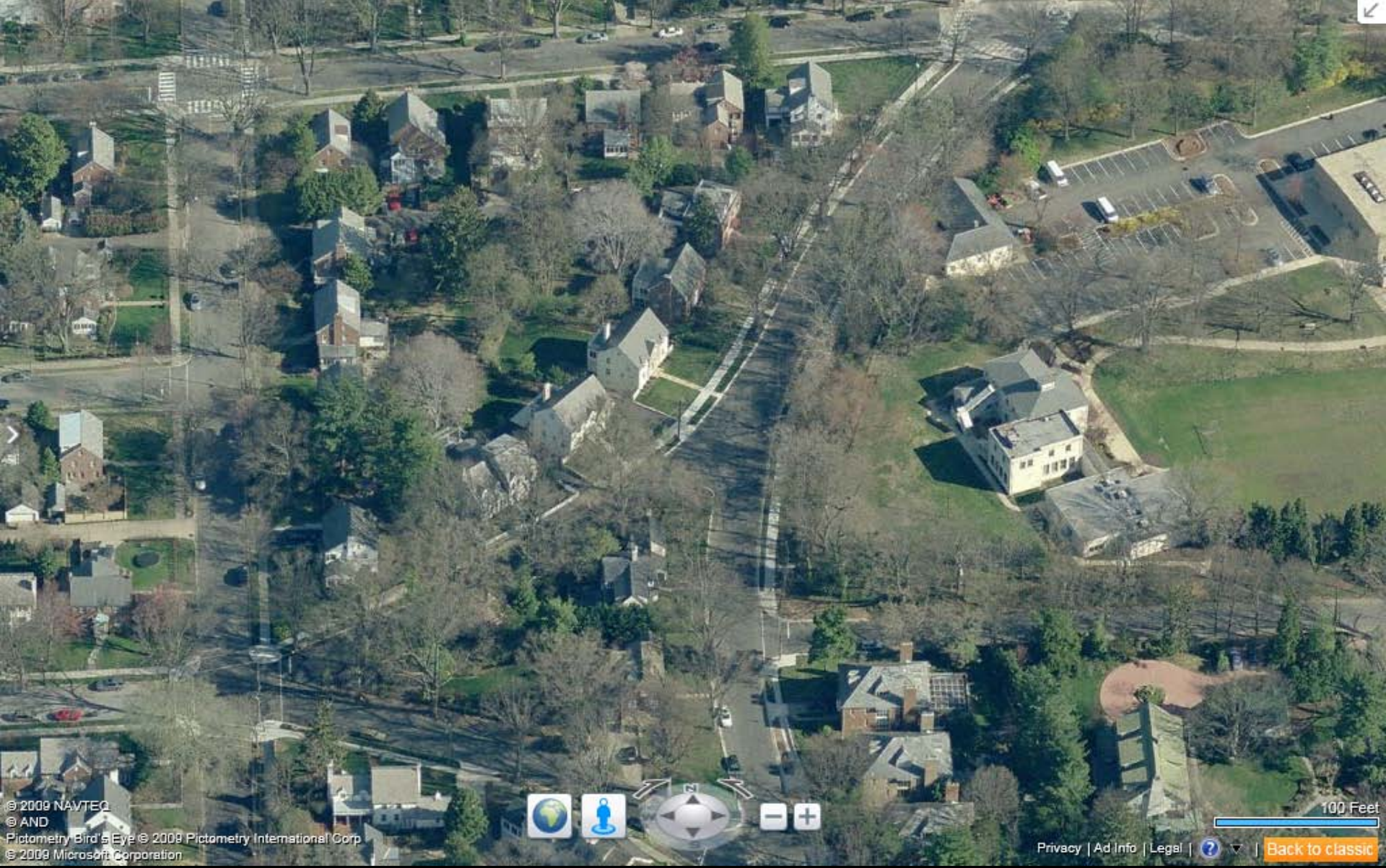


100 Feet  
[Privacy](#) | [Ad Info](#) | [Legal](#) | [?](#) | [Back to classic](#)



© 2008 NAVTEQ  
© AND  
Pictometry Bird's Eye © 2008 Pictometry International Corp  
© 2008 Microsoft Corporation

Privacy | Ad Info | Legal | ? | [Back to classic](#)



© 2009 NAVTEQ  
© AND  
Pictometry Bird's Eye © 2009 Pictometry International Corp  
© 2009 Microsoft Corporation



100 Feet  
[Privacy](#) | [Ad Info](#) | [Legal](#) | [?](#) | [Back to classic](#)



THE AMERICAN UNIVERSITY CAMPUS AND ENVIRONS  
Washington, D. C.

COURTESY AIRING SERVICE, Photo No.  
No. O-162











### Community Relations web page

<http://www.american.edu/communityrelations/>

### Campus Plan web page

<http://www.american.edu/finance/fas/Campus-Plan.cfm>

AMERICAN UNIVERSITY WASHINGTON, DC

Discover AU | Admissions & Financial Aid | Academics | Campus Life | Global Involvement & Public Service | News | Research | Athletics | Alumni

Find: Schools & Colleges, Offices, Degrees

› AU in the Neighborhood

COMMUNITY RELATIONS HOME

CAMPUS RESOURCES

- Athletics
- Campus Dining & Retail
- Events & Programs
- Fitness Center Memberships
- Katzen Arts Center
- Learning at AU
- Library Access
- Neighborhood Guide
- Osher Lifelong Learning Center
- WAMU
- Working at AU

COMMUNITY INFORMATION

UNIVERSITY LINKS

**The Garden of Knowledge**

With over 2,000 trees on campus, AU was designated an arboretum and public garden.

READ MORE

Katzen Center | Arboretum and Public Garden | Retail Shops | Campus Store | Dining on Campus

› Campus Plan

FAS HOME

› FAS DEPARTMENTS

› CAMPUS PROJECTS

- Facilities Projects
- Campus Plan

› STRATEGIC INITIATIVES

› CAMPUS FEATURES

› MEET THE STAFF

› FINANCE AND TREASURER DEPARTMENTS

**Campus Plan**

› ABOUT THE CAMPUS PLAN

American University's Campus Plan is a "roadmap" that details proposals and objectives to enhance and build upon our campus facilities for the next decade. We are launching a new Campus Plan - to be approved by the Zoning Commission - to replace the existing plan.

Visit this site frequently to keep abreast of all the latest news and developments regarding the Campus Plan currently in the works, as well as information about the 2000 Campus Plan.

› WHAT'S NEW

**Next 2011 Campus Plan Meeting**

Tuesday, October 20, 7 p.m., Mary Graydon Center, Rooms 3

[Previous Meetings](#)

› 2000 CAMPUS PLAN

READ THE ENTIRE CAMPUS PLAN

› 2011 CAMPUS PLAN DEVELOPMENTS

Get the latest developments of our "roadmap" for the next decade.

LEARN MORE ABOUT THE 2011

› QUESTIONS?

Email [campusplan@american.edu](mailto:campusplan@american.edu)



March 23

April 20