



AMERICAN UNIVERSITY

MASTER PLAN 2011

DRAFT

October 13, 2010



American University
4400 Massachusetts Avenue, NW
Washington DC 20016-0200

Project
**AMERICAN
UNIVERSITY
CAMPUS PLAN
2011**



McKissack McKissack
1401 New York Avenue, NW
Suite 900
Washington DC 20006

Date
October 13, 2010



Drawing Name

**EXISTING ILLUSTRATIVE
CAMPUS PLAN**

Drawing No.

1

copyright, ©2008 McKissack&McKissack



American University
4400 Massachusetts Avenue, NW
Washington DC 20016-0200

Project
**AMERICAN
UNIVERSITY
CAMPUS PLAN
2011**



McKissack McKissack
1401 New York Avenue, NW
Suite 900
Washington DC 20006

Date
October 13, 2010

Scale
N.T.S. 

Drawing Name

**PROPOSED
ILLUSTRATIVE CAMPUS
PLAN**

Drawing No.

2

copyright, ©2008 McKissack&McKissack



American University
4400 Massachusetts Avenue, NW
Washington DC 20015-0200

Project
**AMERICAN UNIVERSITY
CAMPUS PLAN
2011**



McKissack McKissack
1401 New York Avenue, NW
Suite 900
Washington DC 20006

Date
October 13, 2010

Scale
N.T.S.

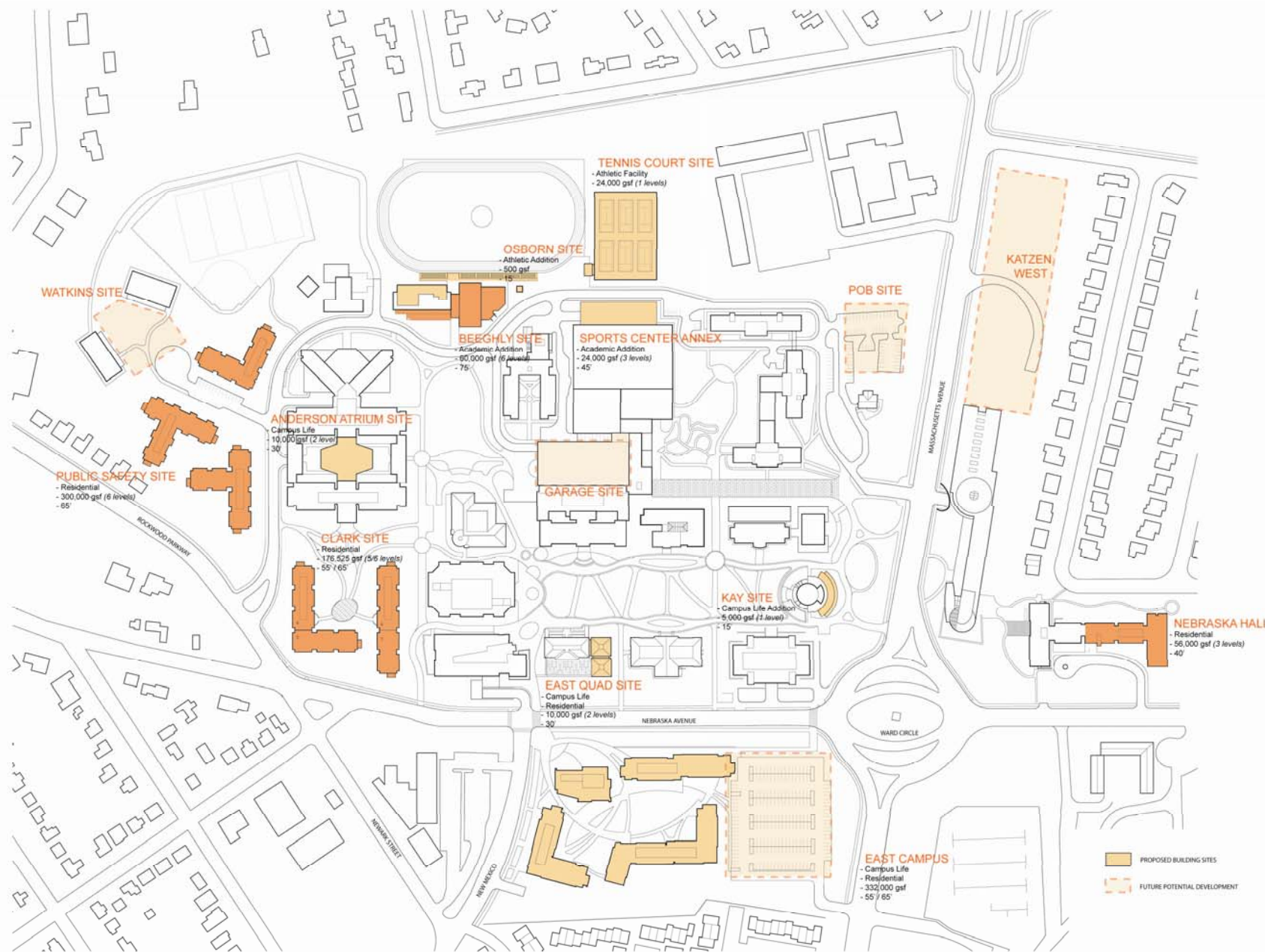
Drawing Name

PROPOSED BUILDING SITES

Drawing No.

3

copyright, ©2008 McKissack & McKissack



CLARK SITE



CLARK SITE
McCabe Hall and
Gray Hall

Site Area
 160 ft x 220 ft
 35,200 sf

Zoning
 R-5-A
 New potential site

Existing Structures
McCabe Hall
 Area 15,226 sf
 Height 25 ft

Gray Hall
 Area 15,068 sf
 Height 25 ft

Parking 54 spaces

Boundaries / Adjacencies

- North - Parking / Roper Hall and Clark Hall
- South - Rockwood Parkway / Fletcher Gate
- East - Nebraska Avenue
- West - Letts Hall

Site Attributes

- Fletcher Gate and Nebraska Avenue location
- Proximity to Bender Library and The Academic Quad
- Potential new open space opportunity bounded by McCabe, Roper, Gray and Letts Halls.



1



2



3



American University
 4400 Massachusetts Avenue, NW
 Washington DC 20016-8200

Project
AMERICAN
UNIVERSITY
CAMPUS PLAN
2011



McKissack McKissack
 1401 New York Avenue, NW
 Suite 900
 Washington DC 20006

Date
 October 13, 2010

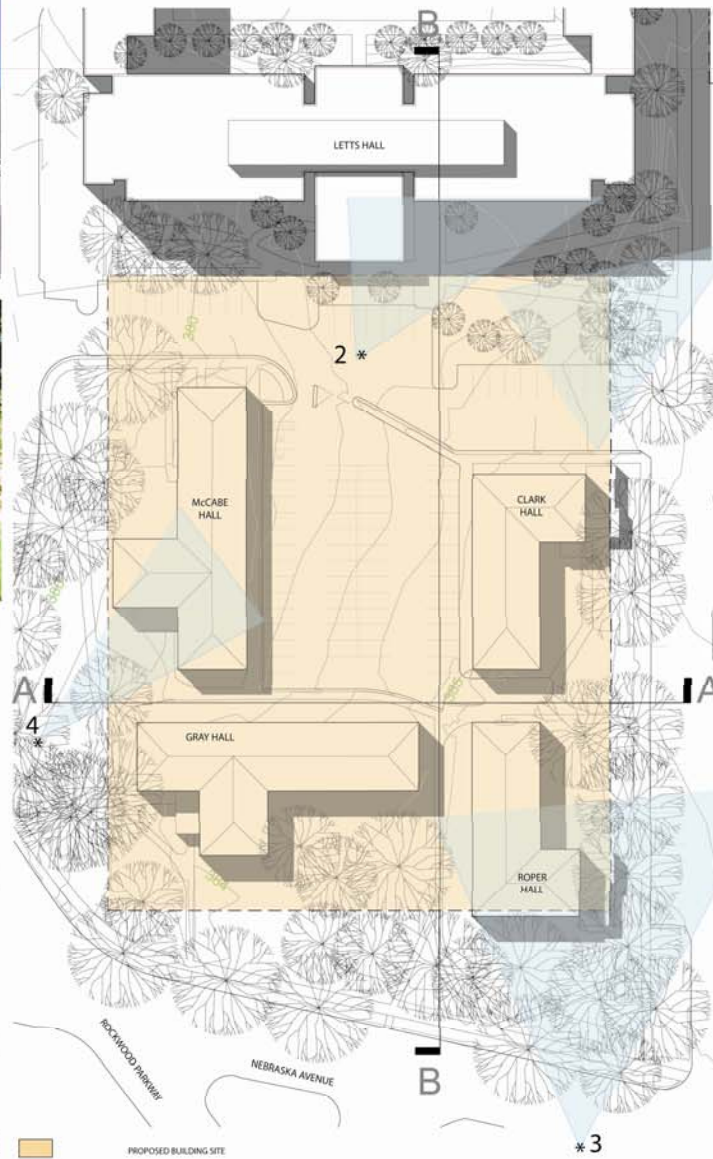
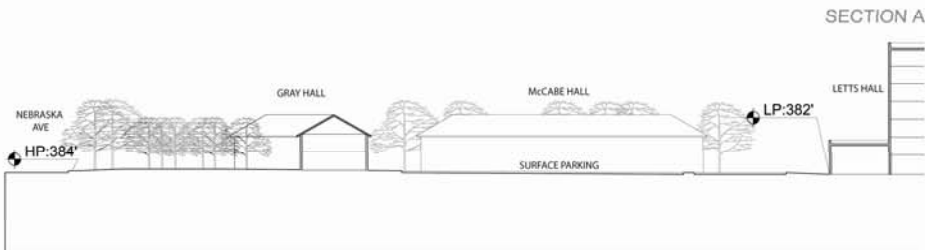
Scale
 N.T.S.

Drawing Name

CLARK SITE
EXISTING CONDITIONS

Drawing No.

5



American University
4400 Massachusetts Avenue, NW
Washington DC 20016-0200

Project
**AMERICAN
UNIVERSITY
CAMPUS PLAN
2011**



McKissack McKissack
1401 New York Avenue, NW
Suite 900
Washington DC 20006

Date
October 13, 2010

Scale
N.T.S.

Drawing Name

**CLARK SITE
EXISTING CONDITIONS**

Drawing No.

6

copyright, ©2008 McKissack & McKissack

CLARK SITE
McCabe Hall, Gray Hall, Roper Hall, and Clark Hall



American University
 4400 Massachusetts Avenue, NW
 Washington DC 20016-0200

Project
AMERICAN UNIVERSITY CAMPUS PLAN 2011



McKissack McKissack
 1401 New York Avenue, NW
 Suite 900
 Washington DC 20006

Date
 October 13, 2010

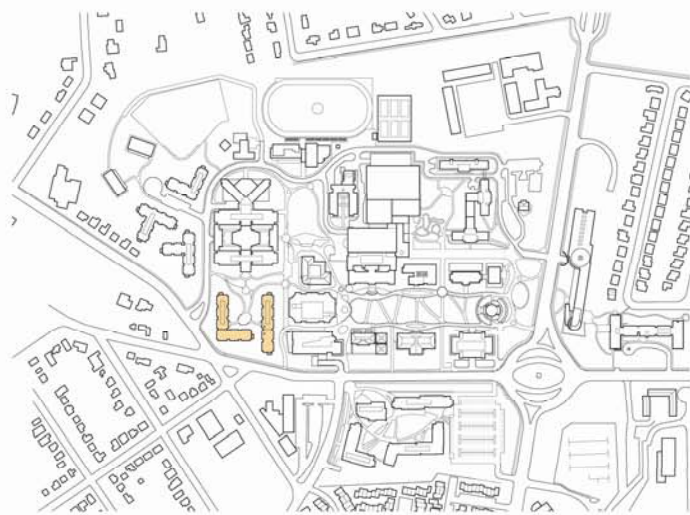
Scale
 N.T.S.

Drawing Name

**CLARK SITE
 PROPOSED CONDITIONS**

Drawing No.
7

copyright, ©2008 McKissack & McKissack





American University
4400 Massachusetts Avenue, NW
Washington DC 20016-0200

Project
**AMERICAN
UNIVERSITY
CAMPUS PLAN
2011**



McKissack McKissack
1401 New York Avenue, NW
Suite 900
Washington DC 20006

Date
October 13, 2010

Scale
N.T.S.

Drawing Name

CLARK SITE
*view from Rockwood Pkwy
and Nebraska Avenue*

Drawing No.

8

copyright, ©2008 McKissack & McKissack



American University
4400 Massachusetts Avenue, NW
Washington DC 20016-0200

Project
**AMERICAN
UNIVERSITY
CAMPUS PLAN
2011**

McKissack
&
McKissack

McKissack McKissack
1401 New York Avenue, NW
Suite 900
Washington DC 20006

Date

October 13, 2010

Scale

N.T.S.

Drawing Name

CLARK SITE

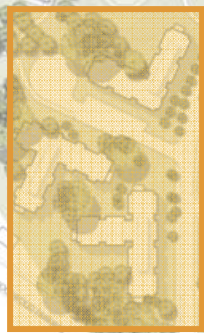
View from
Nebraska Avenue NW

Drawing No.

9

copyright, ©2008 McKissack & McKissack

PUBLIC SAFETY SITE



PUBLIC SAFETY / SOUTH CAMPUS SITE
Financial Aid Building, Public Safety Building and Rockwood Building

Site Area
 130 ft x 160 ft
 20,800 sf

Zoning
 R-5-A
 Currently included in the 2001 campus plan

Existing Structures

Financial Aid Building
 Area 2,915 sf
 Height 20 ft

Public Safety Building
 Area 4,391 sf
 Height 20 ft

Rockwood Building
 Area 1,895 sf
 Height 20 ft

Parking 14 spaces

Boundaries /Adjacencies

- North - Letts Hall
- South - Residential fronting Rockway Parkway
- East - Rockway Parkway / Fletcher Gate
- West - Kreeger Building

Site Attributes

- Fletcher Gate location
- Axial relationship thru Letts Hall to campus center.
- Site defines the western edge of the campus
- Adjacent to shuttle bus stop



1



2



3



American University
 4400 Massachusetts Avenue, NW
 Washington DC 20016-0200

Project
AMERICAN UNIVERSITY CAMPUS PLAN 2011



McKissack McKissack
 1401 New York Avenue, NW
 Suite 900
 Washington DC 20006

Date
 October 13, 2010

Scale
 N.T.S.

Drawing Name
PUBLIC SAFETY / SOUTH CAMPUS SITE EXISTING CONDITIONS

Drawing No.

11



1

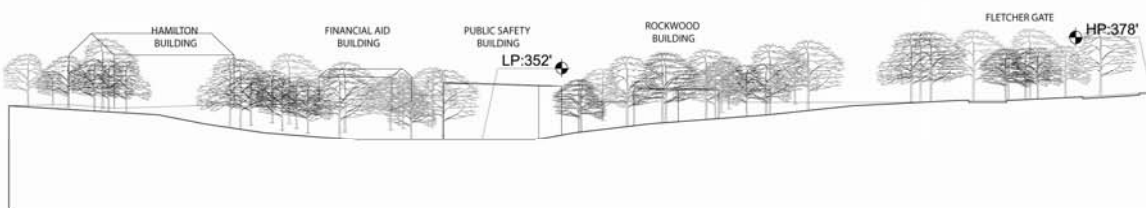
2

3

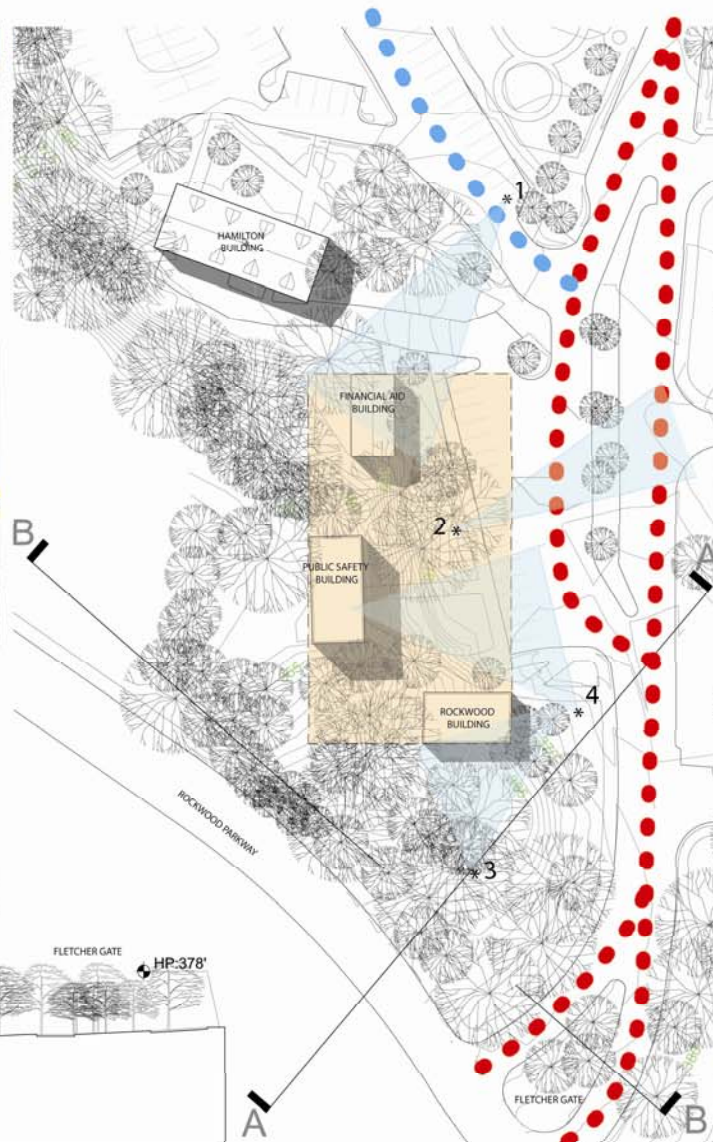
4



SECTION A



SECTION B



- PROPOSED BUILDING SITE
- EXISTING PRIMARY CAMPUS VEHICULAR CIRCULATION
- EXISTING SECONDARY CAMPUS VEHICULAR CIRCULATION



American University
4400 Massachusetts Avenue, NW
Washington DC 20016-0200

Project
AMERICAN UNIVERSITY CAMPUS PLAN 2011



McKissack McKissack
1401 New York Avenue, NW
Suite 900
Washington DC 20006

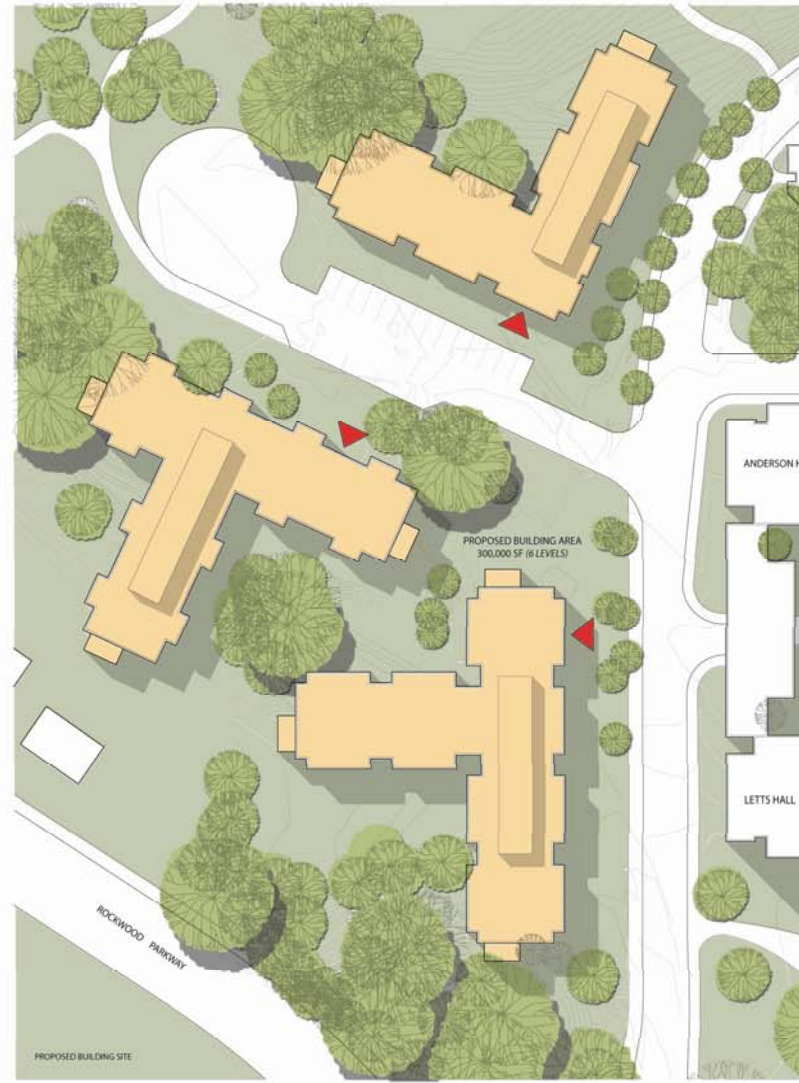
Date
October 13, 2010

Scale
N.T.S.

Drawing Name
PUBLIC SAFETY / SOUTH CAMPUS SITE EXISTING CONDITIONS

Drawing No.
12
copyright, ©2008 McKissack&McKissack

PUBLIC SAFETY / SOUTH CAMPUS SITE
Financial Aid Building, Public Safety Building, and
Rockwood Building



- PROPOSED BUILDING SITE
- PROPOSED BUILDING ENTRANCE
- PROPOSED SERVICE ACCESS



American University
 4400 Massachusetts Avenue, NW
 Washington DC 20016-0200

Project
AMERICAN UNIVERSITY
CAMPUS PLAN
2011



McKissack McKissack
 1401 New York Avenue, NW
 Suite 900
 Washington DC 20006

Date
 October 13, 2010

Scale
 N.T.S.

Drawing Name
PUBLIC SAFETY /
SOUTH CAMPUS SITE
PROPOSED CONDITIONS

Drawing No.
13
 copyright, ©2008 McKissack&McKissack



American University
4400 Massachusetts Avenue, NW
Washington DC 20016-0200

Project
**AMERICAN
UNIVERSITY
CAMPUS PLAN
2011**

McKissack
&
McKissack

McKissack McKissack
1401 New York Avenue, NW
Suite 900
Washington DC 20006

Date

October 13, 2010

Scale

N.T.S.

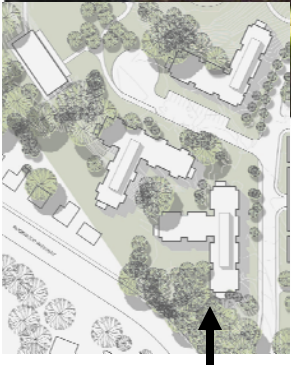
Drawing Name

**PUBLIC SAFETY /
SOUTH CAMPUS SITE**
View from Rockwood Pkwy
Campus Entrance

Drawing No.

14

copyright, ©2008 McKissack & McKissack



American University
4400 Massachusetts Avenue, NW
Washington DC 20016-0200

Project
**AMERICAN
UNIVERSITY
CAMPUS PLAN
2011**



McKissack McKissack
1401 New York Avenue, NW
Suite 900
Washington DC 20006

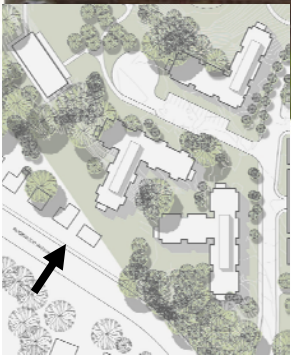
Date
October 13, 2010

Scale
N.T.S.

Drawing Name
**PUBLIC SAFETY /
SOUTH CAMPUS SITE**
*View through trees at
Campus Entrance*

Drawing No.
15

copyright, © 2008 McKissack & McKissack



American University
4400 Massachusetts Avenue, NW
Washington DC 20016-0200

Project
**AMERICAN
UNIVERSITY
CAMPUS PLAN
2011**



McKissack McKissack
1401 New York Avenue, NW
Suite 900
Washington DC 20006

Date
October 13, 2010

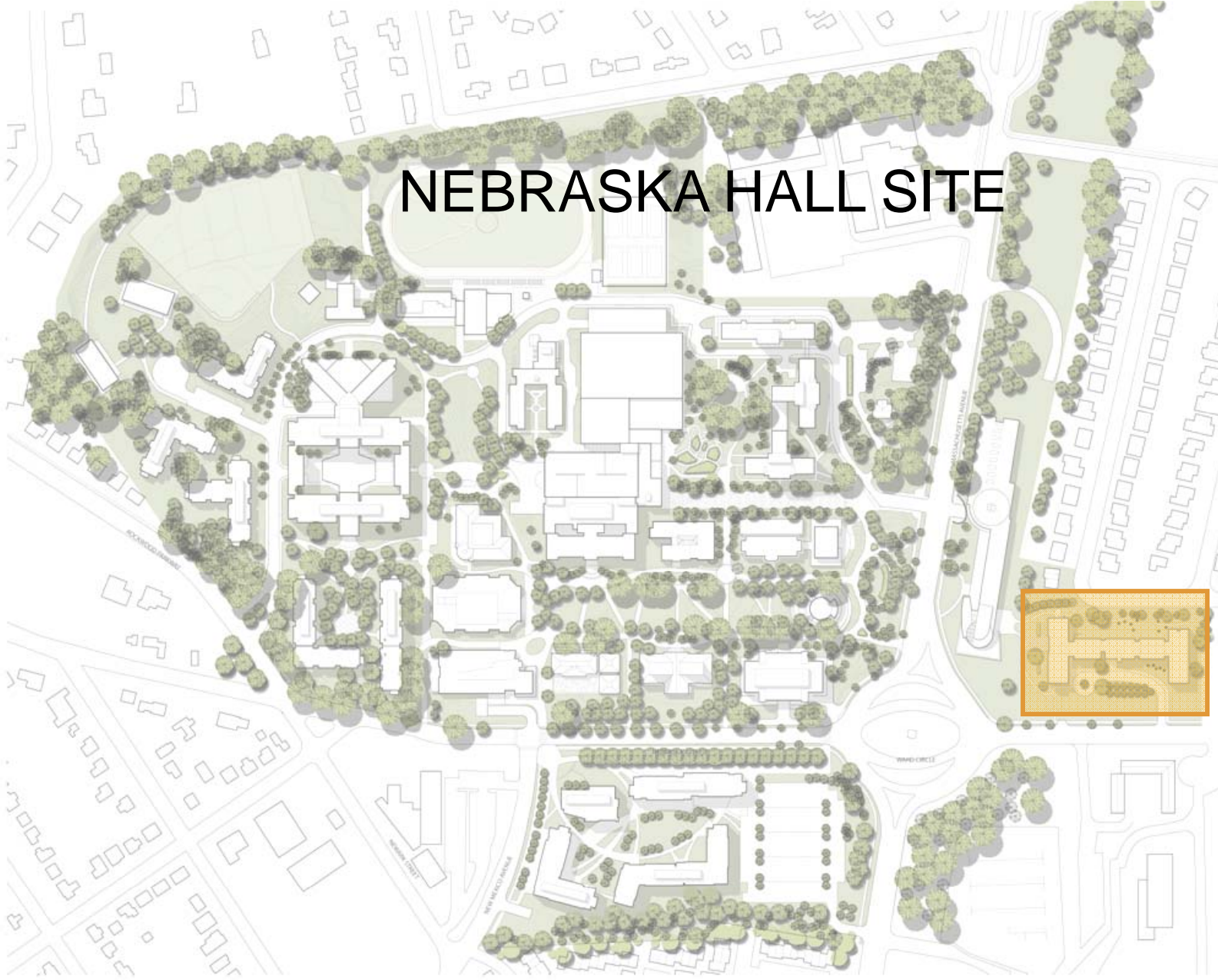
Scale
N.T.S.

Drawing Name
**PUBLIC SAFETY /
SOUTH CAMPUS SITE**
*View through houses at
Rockwood Pkwy*

Drawing No.
16

copyright, ©2008 McKissack & McKissack

NEBRASKA HALL SITE



NEBRASKA HALL SITE
Nebraska Hall

Site Area
160 ft x 150 ft
24,000 sf

Zoning
R-1-B
New potential site

Existing Structures
Area 44,045 sf
Height 50 ft
Parking 26 spaces

Boundaries / Adjacencies
North - Nebraska Hall Parking
South - 70' Wide Landscape Area / Katzen Center
East - Nebraska Avenue
West - 44th Street / Residential

Site Attributes
- Nebraska Avenue access
- Remote location from campus
- Existing residential building recently renovated
- Landscape buffer at 44th Street boundary



1



2



3



American University
4400 Massachusetts Avenue, NW
Washington DC 20016-0200

Project
**AMERICAN UNIVERSITY
CAMPUS PLAN
2011**



McKissack McKissack
1401 New York Avenue, NW
Suite 900
Washington DC 20006

Date
October 13, 2010

Scale
N.T.S.

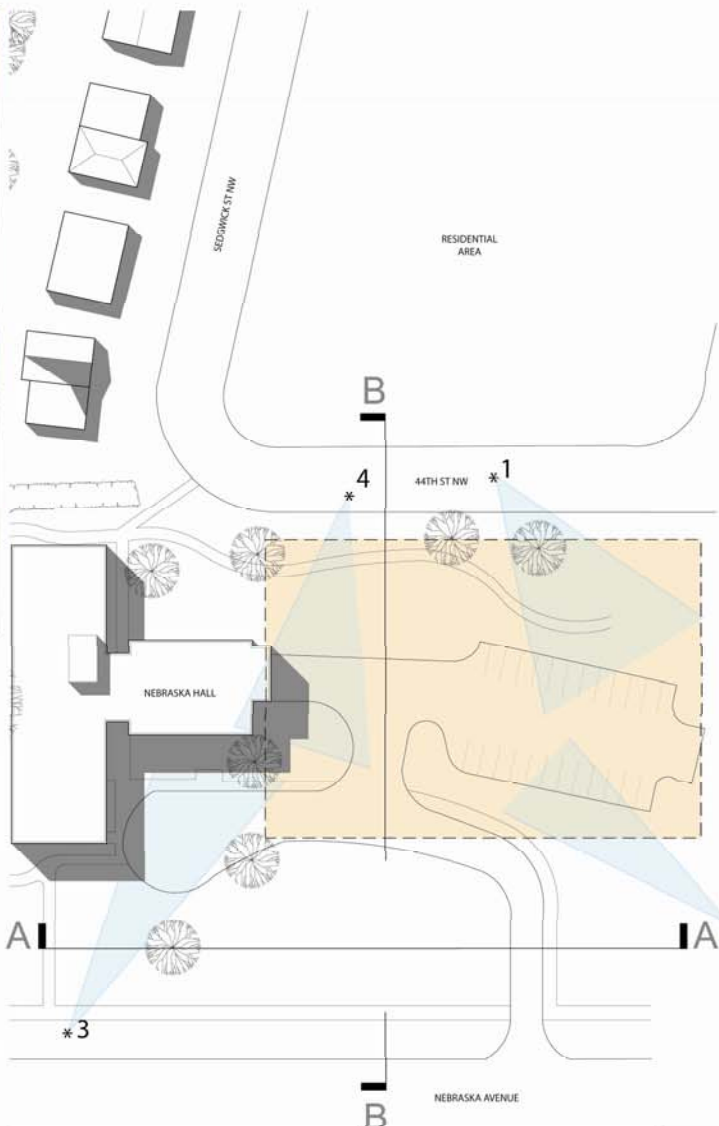
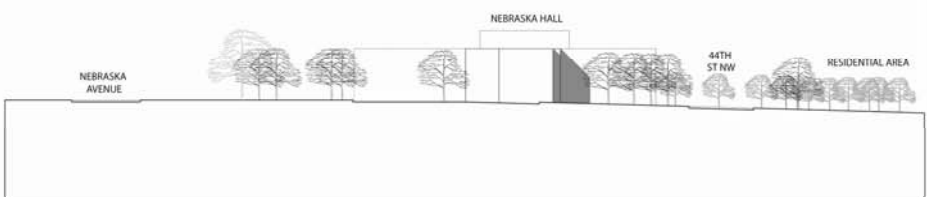
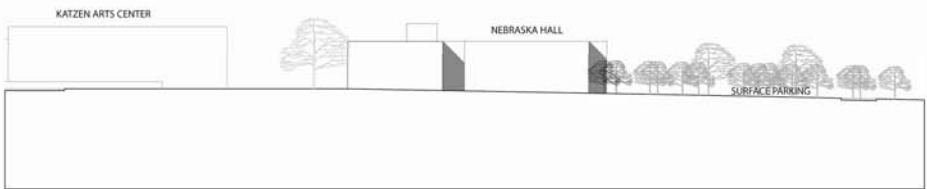
Drawing Name

**NEBRASKA HALL SITE
EXISTING CONDITIONS**

Drawing No.

18

copyright, ©2008 McKissack & McKissack



American University
4400 Massachusetts Avenue, NW
Washington DC 20016-0200

Project
**AMERICAN UNIVERSITY
CAMPUS PLAN
2011**



McKissack McKissack
1401 New York Avenue, NW
Suite 900
Washington DC 20006

Date
October 13, 2010

Scale
N.T.S.

Drawing Name

**NEBRASKA HALL SITE
EXISTING CONDITIONS**

Drawing No.

19

copyright, ©2008 McKissack & McKissack

NEBRASKA HALL SITE
Nebraska Hall



American University
4400 Massachusetts Avenue, NW
Washington DC 20016-0200

Project
**AMERICAN
UNIVERSITY
CAMPUS PLAN
2011**



McKissack McKissack
1401 New York Avenue, NW
Suite 900
Washington DC 20006

Date
October 13, 2010

Scale
N.T.S.

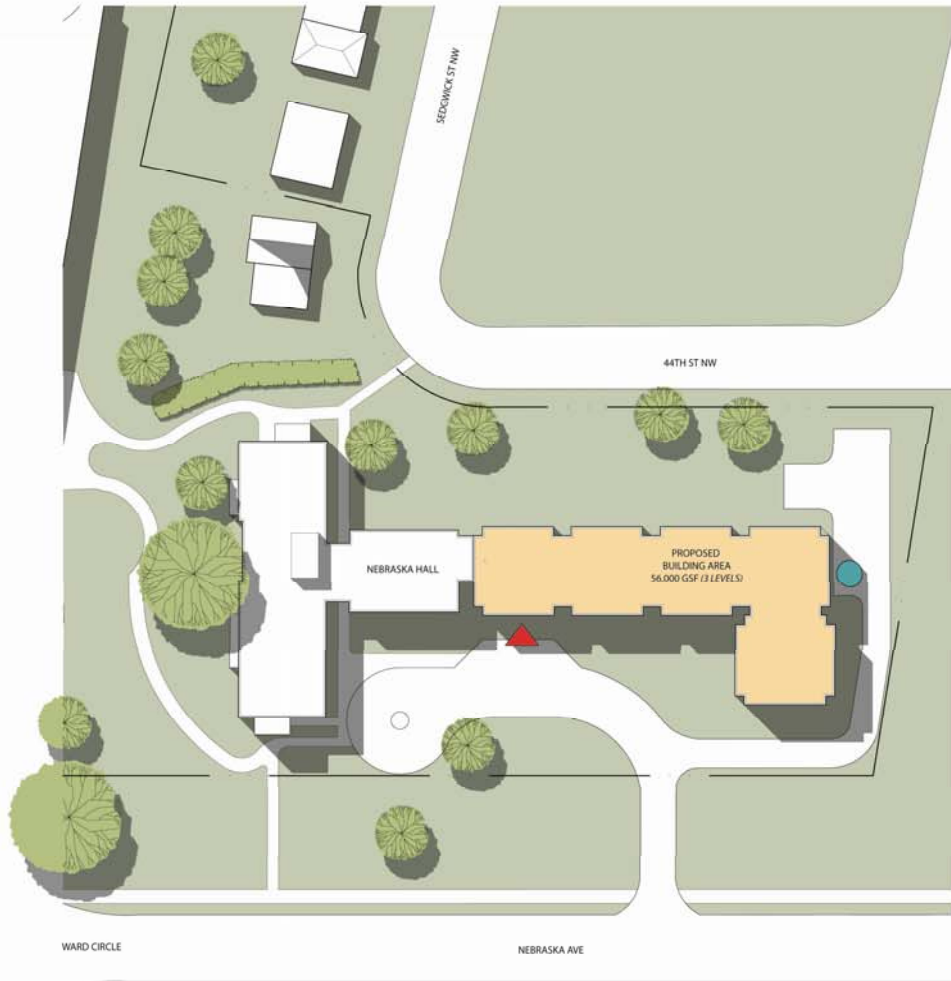
Drawing Name

**NEBRASKA HALL SITE
PROPOSED CONDITIONS**

Drawing No.

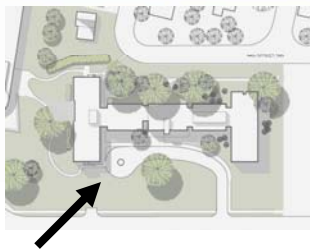
20

copyright, ©2008 McKissack & McKissack



-  PROPOSED BUILDING SITE
-  PROPOSED BUILDING ENTRANCE
-  PROPOSED SERVICE ACCESS





American University
4400 Massachusetts Avenue, NW
Washington DC 20016-0200

Project
**AMERICAN
UNIVERSITY
CAMPUS PLAN
2011**

McKissack
&
McKissack

McKissack McKissack
1401 New York Avenue, NW
Suite 900
Washington DC 20006

Date

October 13, 2010

Scale

N.T.S.

Drawing Name

NEBRASKA SITE
View from Ward Circle

Drawing No.

21

copyright, ©2008 McKissack & McKissack



American University
 4400 Massachusetts Avenue, NW
 Washington DC 20016-0200

Project
**AMERICAN
 UNIVERSITY
 CAMPUS PLAN
 2011**



McKissack McKissack
 1401 New York Avenue, NW
 Suite 900
 Washington DC 20006

Date
 October 13, 2010

Scale
 N.T.S.

Drawing Name

NEBRASKA SITE
 View from 44th ST NW

Drawing No.

22



American University
4400 Massachusetts Avenue, NW
Washington DC 20016-0200

Project
**AMERICAN
UNIVERSITY
CAMPUS PLAN
2011**



McKissack McKissack
1401 New York Avenue, NW
Suite 900
Washington DC 20006

Date
October 13, 2010

Scale
N.T.S.

Drawing Name

NEBRASKA SITE
View from 44th ST NW

Drawing No.
23

copyright, © 2008 McKissack & McKissack



BEEGHLY SITE



BEEGHLY SITE
Beeghly Building Loading Area

Site Area
 100 ft x 120 ft
 12,000 sf

Zoning
 R-5-A
 New potential site

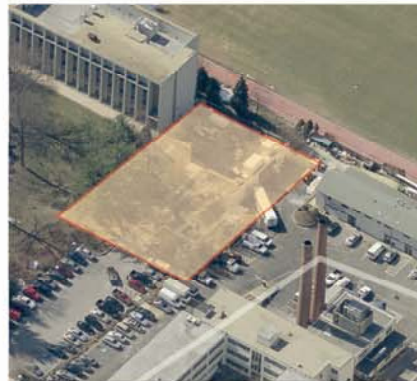
Existing Structures
 Beeghly Building Loading Area

Boundaries / Adjacencies
 North - Osborn Building / Surface Parking
 South - Beeghly Building
 East - Surface Parking
 West - Reeves Field

- Site Attributes**
- Directly adjacent to Beeghly Building
 - Adjacent to existing Osborn Building
 - Reeves Field exposure to the West
 - Site currently serves as Beeghly Building loading area



1



2



3



American University
 4400 Massachusetts Avenue, NW
 Washington DC 20016-0200

Project
AMERICAN UNIVERSITY
CAMPUS PLAN
2011



McKissack McKissack
 1401 New York Avenue, NW
 Suite 900
 Washington DC 20006

Date
 October 13, 2010

Scale
 N.T.S.

Drawing Name

BEEGHLY SITE
EXISTING CONDITIONS

Drawing No.

25

copyright, ©2008 McKissack & McKissack

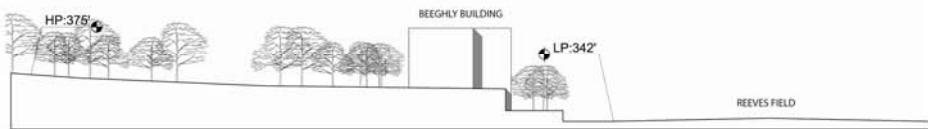


1

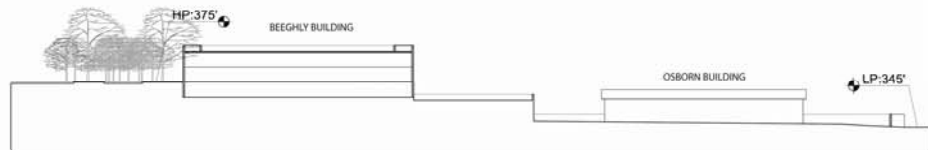
2

3

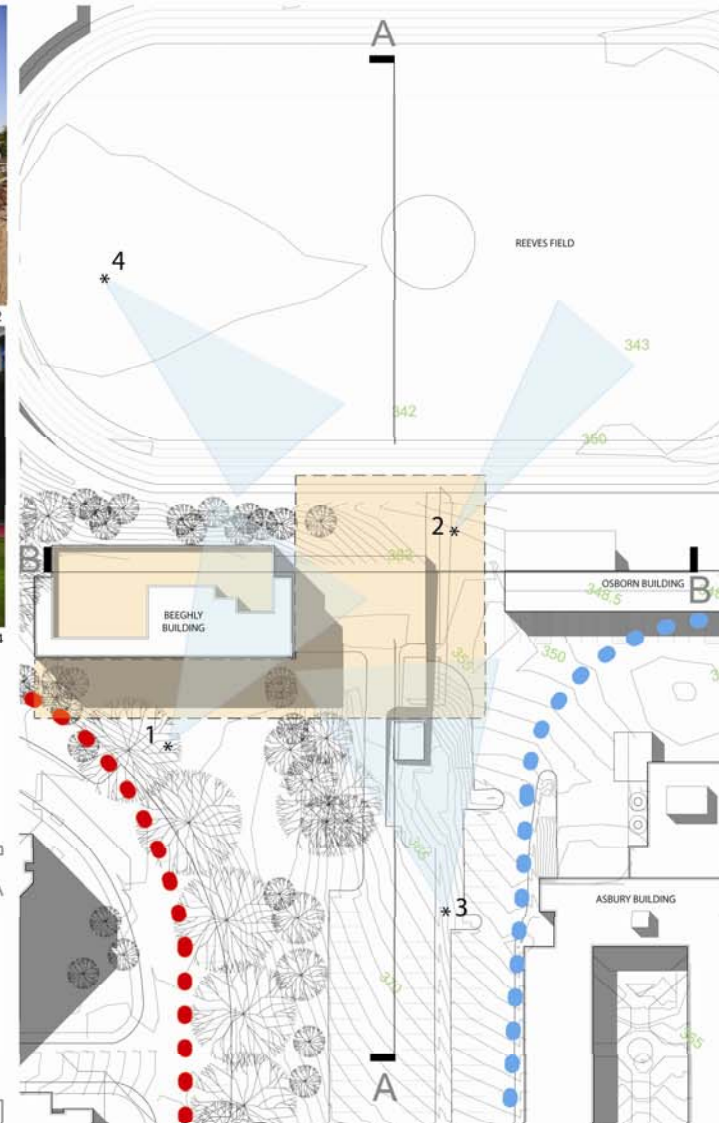
4



SECTION A



SECTION B



- PROPOSED BUILDING SITE
- EXISTING PRIMARY CAMPUS VEHICULAR CIRCULATION
- EXISTING SECONDARY CAMPUS VEHICULAR CIRCULATION



American University
4400 Massachusetts Avenue, NW
Washington DC 20016-0200

Project
**AMERICAN UNIVERSITY
CAMPUS PLAN
2011**



McKissack McKissack
1401 New York Avenue, NW
Suite 900
Washington DC 20006

Date
October 13, 2010

Scale
N.T.S.

Drawing Name

**BEEGLY SITE
EXISTING CONDITIONS**

Drawing No.

26

copyright, © 2008 McKissack & McKissack

BEEGHLY SITE
Science Building Addition



American University
 440 Massachusetts Avenue, NW
 Washington DC 20016-0200

Project
AMERICAN UNIVERSITY
CAMPUS PLAN
2011



McKissack McKissack
 1401 New York Avenue, NW
 Suite 900
 Washington DC 20006

Date
 October 13, 2010

Scale
 N.T.S.

Drawing Name

BEEGHLY SITE
PROPOSED CONDITIONS

Drawing No.
27

copyright, © 2008 McKissack & McKissack





American University
4400 Massachusetts Avenue, NW
Washington DC 20016-0200

Project
**AMERICAN
UNIVERSITY
CAMPUS PLAN
2011**



McKissack McKissack
1401 New York Avenue, NW
Suite 900
Washington DC 20006

Date
October 13, 2010

Scale
N.T.S.

Drawing Name

BEEGHLY SITE
View from
Parking Lot

Drawing No.

28

copyright, ©2008 McKissack & McKissack



American University
4400 Massachusetts Avenue, NW
Washington DC 20016-0200

Project
**AMERICAN
UNIVERSITY
CAMPUS PLAN
2011**



McKissack McKissack
1401 New York Avenue, NW
Suite 900
Washington DC 20006

Date
October 13, 2010

Scale
N.T.S.

Drawing Name

BEEGHLY SITE
View from
Road

Drawing No.

29

copyright, © 2008 McKissack & McKissack



American University
4400 Massachusetts Avenue, NW
Washington DC 20016-0200

Project
**AMERICAN
UNIVERSITY
CAMPUS PLAN
2011**

McKissack
&
McKissack

McKissack McKissack
1401 New York Avenue, NW
Suite 900
Washington DC 20006

Date
October 13, 2010

Scale
N.T.S.

Drawing Name

BEEGHLY SITE
View from
Reeves Field

Drawing No.

30

copyright, ©2008 McKissack & McKissack