



1. Introductions
2. Review additional work for transportation consultants
3. Facilities needs
4. Population history and projections
5. Overview of available sites



Community Relations web page

<http://www.american.edu/communityrelations/>

Newsletter

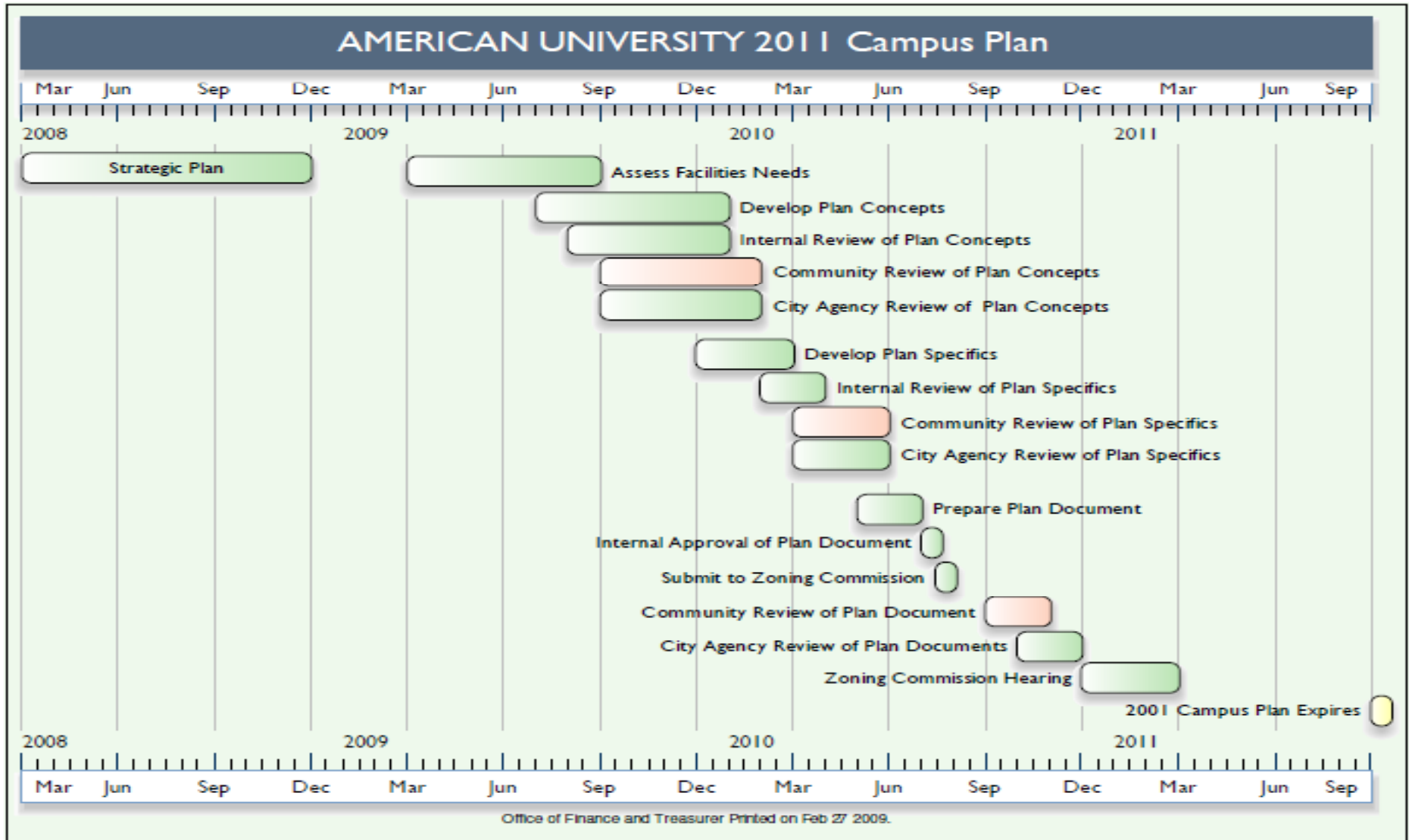
<http://www.american.edu/communityrelations/October-2009-Newsletter.cfm>

The screenshot displays the American University website's navigation and content. At the top, the American University logo and name are visible, along with a search bar and a dropdown menu for finding schools and colleges. Below this is a horizontal navigation bar with links for Discover AU, Admissions & Financial Aid, Academics, Campus Life, Global Involvement & Public Service, News, Research, Athletics, and Alumni. The main content area features a section titled "AU in the Neighborhood" with a "COMMUNITY RELATIONS HOME" button. A sidebar on the left lists "CAMPUS RESOURCES" including Athletics, Campus Dining & Retail, Events & Programs, Fitness Center Memberships, Katzen Arts Center, Learning at AU, Library Access, Neighborhood Guide, Osher Lifelong Learning Center, WAMU, and Working at AU. The main content area has a large image of a garden with the text "The Garden of Knowledge" and a "READ MORE" button. Below the image is a row of buttons for "Katzen Center", "Arboretum and Public Garden", "Retail Shops", "Campus Store", and "Dining on Campus". At the bottom, there are links for "COMMUNITY INFORMATION" and "UNIVERSITY LINKS".



AMERICAN UNIVERSITY

2011 Campus Plan Timetable





September 2009

- Review additional work for transportation consultants
- Facilities needs
- Population history and projections
- Overview of available sites

October 2009

- Present university's strategic direction
- Present and discuss Site Analysis
- Present and discuss Historic Assessment

November 2009

- Discuss Site Analysis
- Present and discuss sustainability issues
- Finalize population assumptions
- **Present status report to ANCs**

January 2010

- Finalize site selection
- Present and discuss initial plan concepts



Facilities Project Planning Team

- **Background:**

Facilities play an important role in supporting the university's educational mission. The Facilities Planning Project Team works collaboratively with students, faculty, and staff to assess the facilities needs of the university and make recommendations for improvements needed to create high quality experiences. The Team will report its progress and recommendations to Don Myers, Vice President of Finance and Treasurer.

- **Team Charge**

In order to fulfill its responsibilities, the Team will:

Identify and catalog facilities needs through review of current inventories of facilities requests, budget submissions, and periodic ad hoc requests for new and/or improved facilities.

Prioritize identified facilities needs consistent with the university's strategic priorities and annual action plans.
Conclude the Team's work with sufficient time to provide meaningful input to the Campus Plan process.

Co-Chairs:

Jerry Gager, Office of University Architect
Andy Popper, Washington College of Law

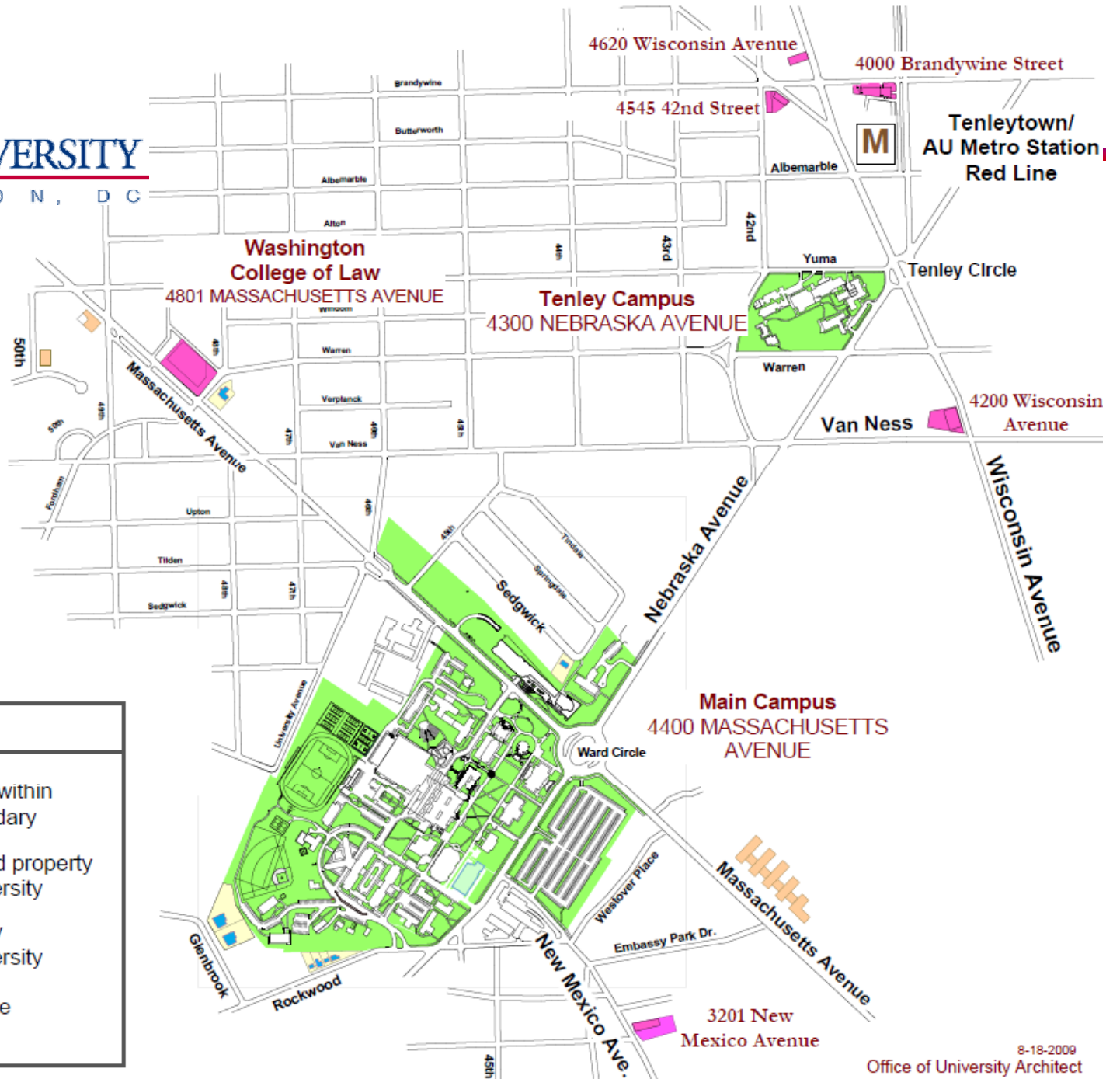
Members:

David Bierwirth, Athletics and Recreation
Linda Bolden-Pitcher, Registrar
Dave Culver, Environmental Science
Frank DuBois, Kogod School of Business
Carol Edwards, Human Resources
Mike Elmore, University Center

Vi Eittle, Provost's Office
Bob Karch, School of Education Teaching and Health
Michelle Mikkelson, University Library
Julie Mills, Undergraduate Student
Chris Moody, Housing and Dining Programs
Kristi Plahn-Gjersvold, Staff Council







AMERICAN UNIVERSITY
WASHINGTON, D.C.



Vicinity Map

Key

-  University Property within Campus Plan Boundary
-  Commercially Zoned property Owned by the University
-  Residential Property Owned by the University
-  Space Leased by the University



Academic: 260,000 ASF

Faculty and staff office space, meeting rooms, lounges,
storage, research & teaching labs

Housing: 250,000 ASF

500 additional apartment style suites

Athletics & Recreation: 125,000 ASF

Additional gymnasium space, locker rooms, fitness center space, multi-purpose
rooms and offices

University Center: 125,000 ASF

Includes expanded dining, retail, auditorium, meeting rooms, offices and support space.



Administrative Services: **64,000** ASF

Includes Welcome Center, additional space for: One-Stop, Career Center, Human Resources, Development Office, Public Safety, Information Technology, Facilities Management, and WAMU.

Alumni Center: **11,000** ASF

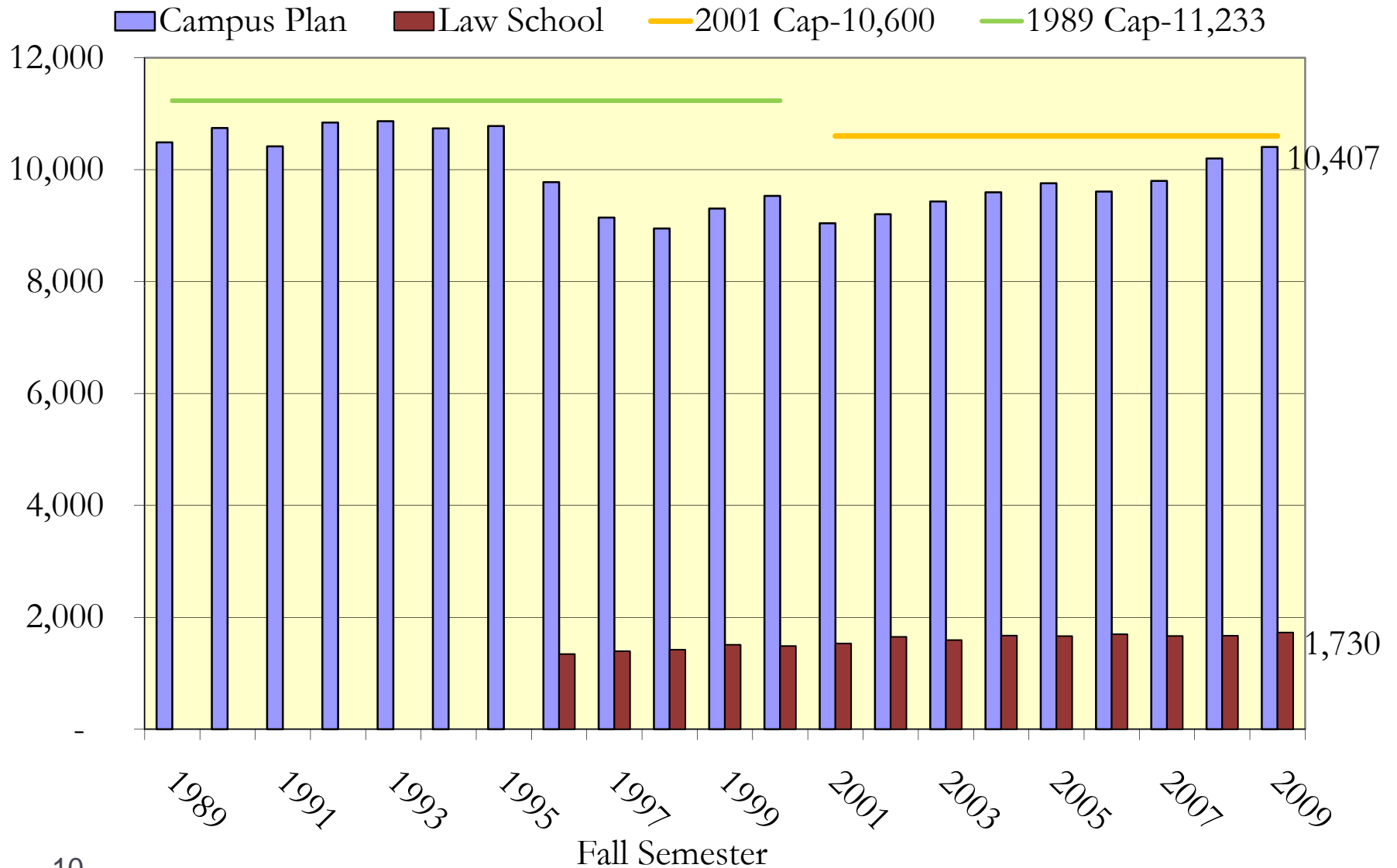
Includes staff offices, resource center, meeting rooms, lodging

TOTAL = 835,000 asf; **1,670,000** gsf



AMERICAN UNIVERSITY

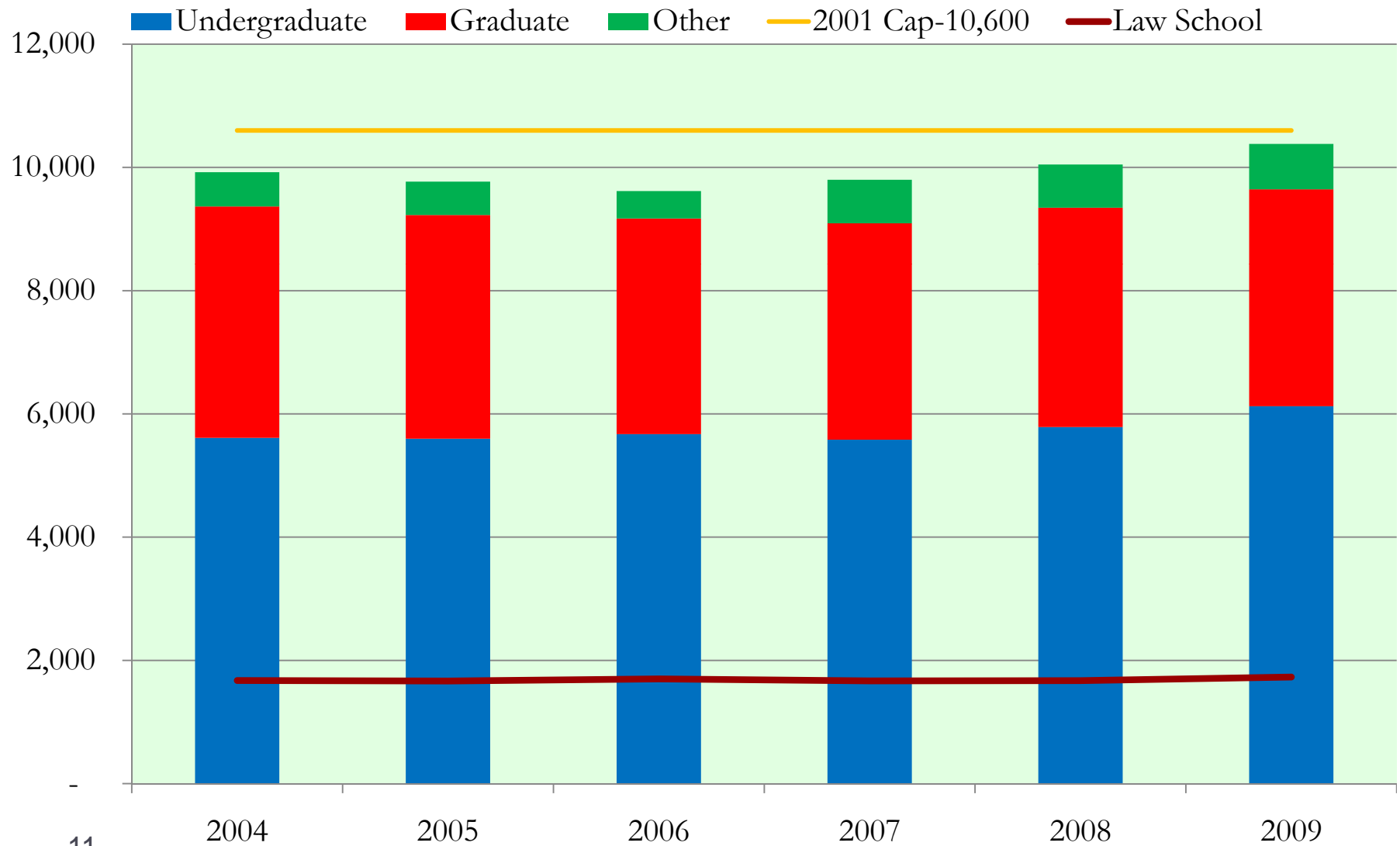
Student Population Headcount 1989-2009





AMERICAN UNIVERSITY

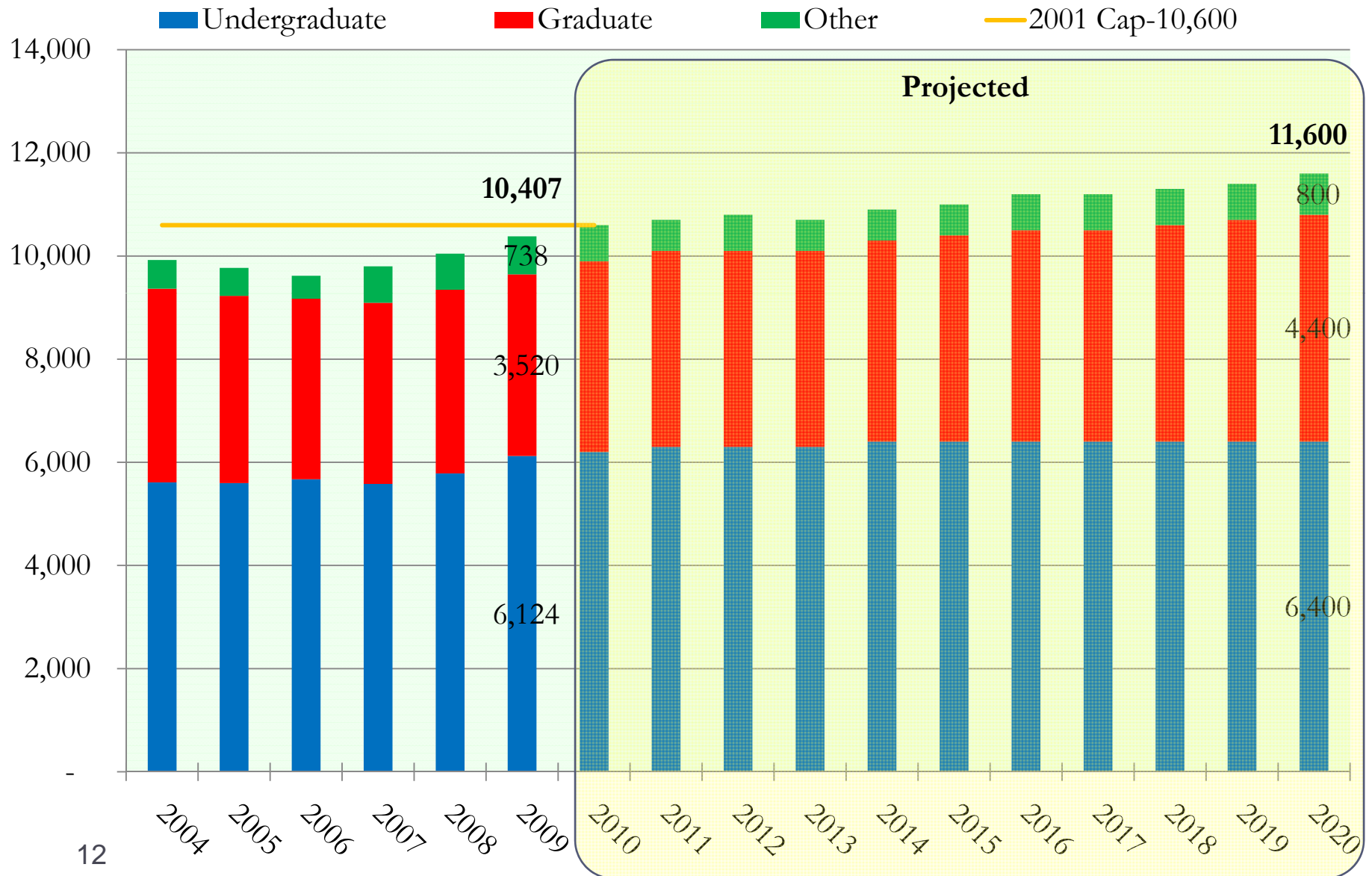
Student Population by Category 2004-2009





AMERICAN UNIVERSITY

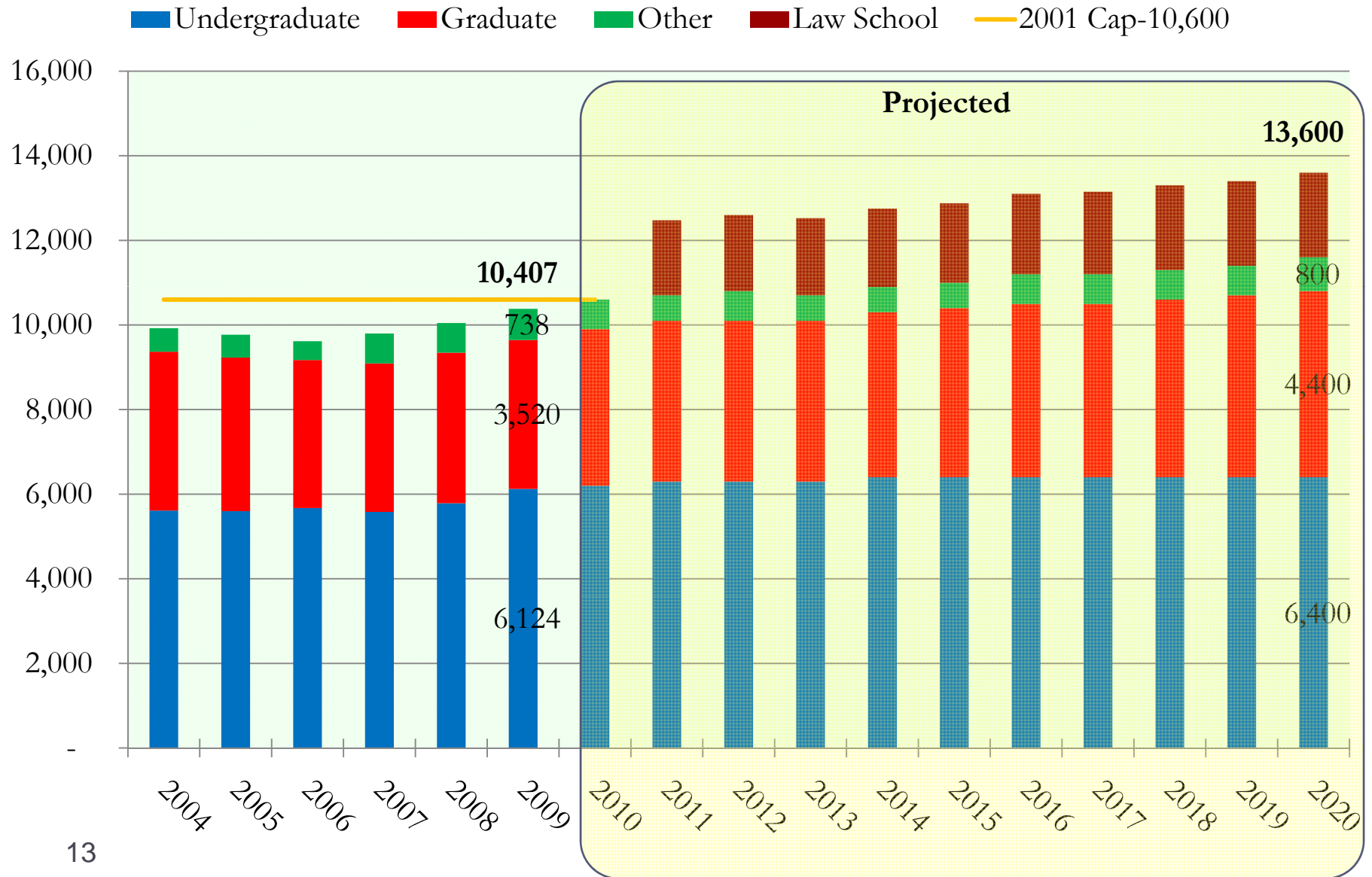
Student Population & Projections 2004-2020





AMERICAN UNIVERSITY

Student Population & Projections 2004-2020 w/ Law School





AMERICAN UNIVERSITY

Campus Plan - Potential Site Inventory

