



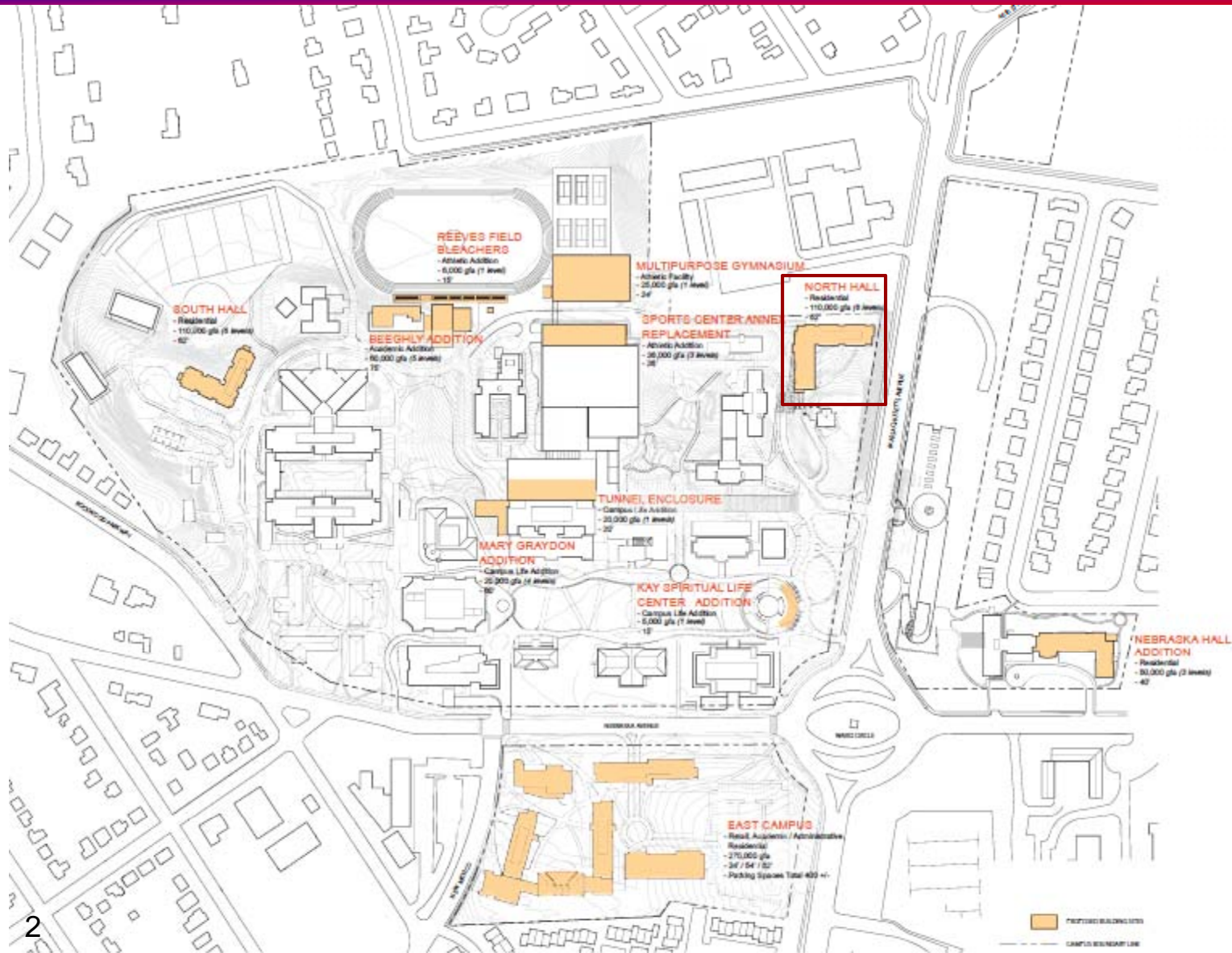
AMERICAN UNIVERSITY
WASHINGTON, DC

North Hall Update
August 30, 2011



AMERICAN UNIVERSITY

Main Campus – Proposed Site Plan



American University
4400 Massachusetts Avenue, NW
Washington DC 20016-4202

Project
**AMERICAN UNIVERSITY
CAMPUS PLAN
2011**



McKinack McKinack
1421 New York Avenue, NW
Suite 300
Washington DC 20005

EXHIBIT 17

Date

May 19, 2011

Scale



Drawing Name

**PROPOSED MAIN
CAMPUS PLAN**

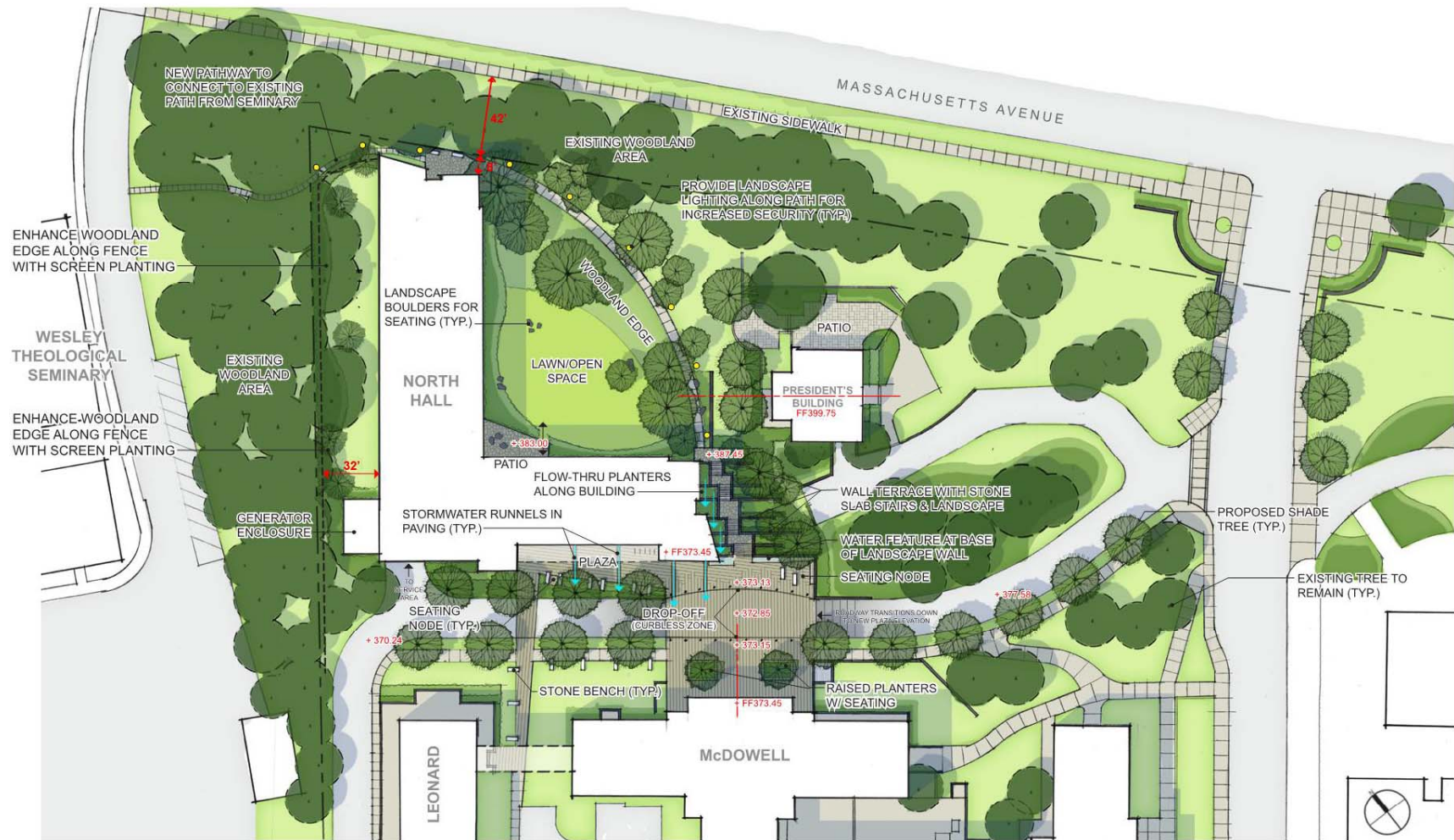
Drawing No.

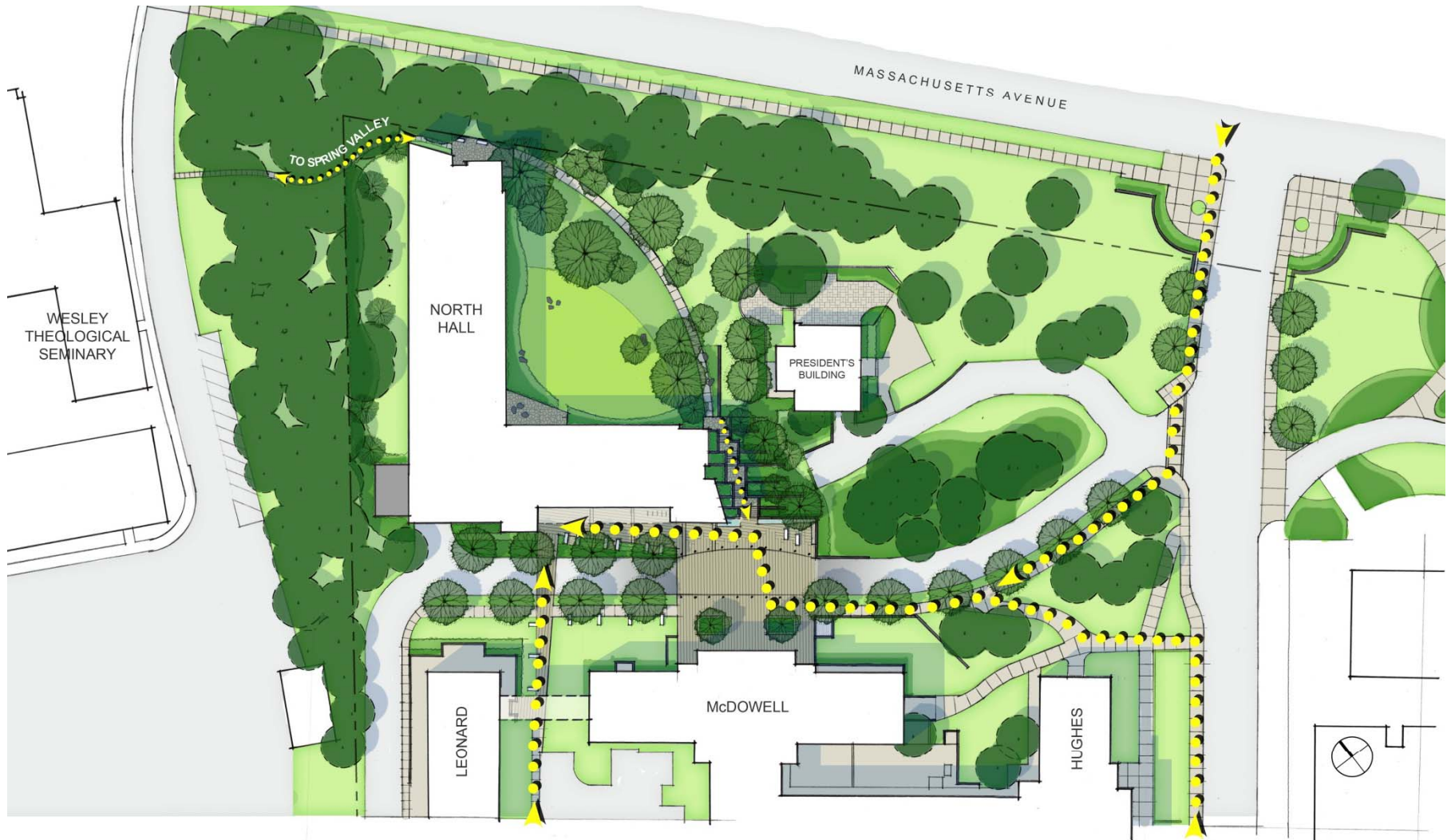
17.1

copyright ©2011 McKinack & McKinack



North Hall – Site Plan – July 18, 2011









AMERICAN UNIVERSITY

Photo A. Hughes Hall





AMERICAN UNIVERSITY

Photo B. President's Office Building





AMERICAN UNIVERSITY

Photo C. McDowell Hall





AMERICAN UNIVERSITY

Photo D. McDowell Hall





North Hall – Ground Floor Plan – July 18, 2011



SHARED SPACES

9,750 SF - PROGRAM SPACE
4,900 SF - SUPPORT

RESIDENCE HALL

1,000 SF - LOWER LEVEL LOBBY
18,200 GSF - RESIDENTIAL UNITS (2-7)

109,200 GSF TOTAL RESIDENTIAL (2-7)
18,200 GSF GROUND FLOOR (1)

354 BEDS (INCLUDES RA BED)
332 (TYPE A)
22 (TYPE B)

295 SF/BED

2

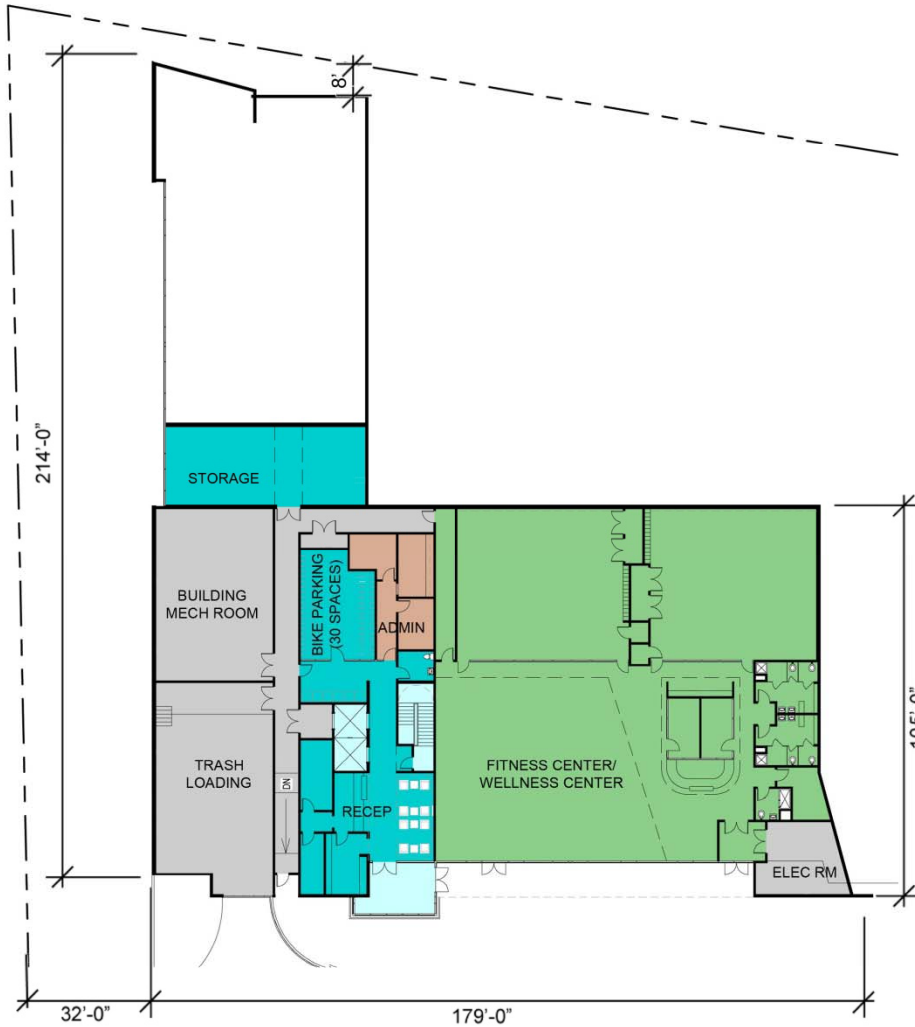
TYPE A UNITS - 52 STUDENT BEDS (13 UNITS)
RA UNIT - 2 BEDS (1 UNIT)
FACULTY UNIT (1 UNIT)

3 - 7

TYPE A UNITS - 56 STUDENT BEDS (14 UNITS)
TYPE B UNIT - 2 STUDENT BEDS (1 UNIT)
RA UNIT - 2 BEDS (1 UNIT)

- LOBBY / CIRCULATION
- PROGRAM SPACE
- SUPPORT





GROUND FLOOR

8,700 SF - PROGRAM SPACE
 4,110 SF - SUPPORT
 3,475 SF - SHARED SPACES/ RESIDENCE HALL
 480 SF - RESIDENTIAL LIFE SUPPORT
 935 SF - LOBBY/ CIRCULATION

17,700 GSF - GROUND FLOOR

TYPICAL FLOOR

18,200 GSF - FLOORS 2-7

126,900 GSF - TOTAL BUILDING

365 BEDS TOTAL

288 (TYPE A @ 755 SF)
 11 (TYPE B @ 300 SF)
 66 (TYPE C @ 1,045 SF)

309 SF/BED

2

TYPE A UNITS - 48 STUDENT BEDS (12 UNITS)
 TYPE B UNITS - 1 STUDENT BED (1 UNIT)
 TYPE C UNITS - 6 STUDENT BEDS (1 UNIT)
 FACULTY UNIT (1 UNIT)

3 - 7

TYPE A UNITS - 48 STUDENT BEDS (12 UNITS)
 TYPE B UNITS - 2 STUDENT BEDS (2 UNITS)
 TYPE C UNITS - 12 STUDENT BEDS (2 UNITS)

-  LOBBY / CIRCULATION
-  PROGRAM SPACE
-  RESIDENTIAL LIFE SUPPORT
-  SHARED SPACES - RESIDENCE HALL
-  SUPPORT





SHARED SPACES

9,750 SF - PROGRAM SPACE
 4,900 SF - SUPPORT

RESIDENCE HALL

1,000 SF - LOWER LEVEL LOBBY
 18,200 GSF - RESIDENTIAL UNITS (2-7)

109,200 GSF TOTAL RESIDENTIAL (2-7)
 18,200 GSF GROUND FLOOR (1)

354 BEDS (INCLUDES RA BED)
 332 (TYPE A)
 22 (TYPE B)

295 SF/BED

2

TYPE A UNITS - 52 STUDENT BEDS (13 UNITS)
 RA UNIT - 2 BEDS (1 UNIT)
 FACULTY UNIT (1 UNIT)

3 - 7

TYPE A UNITS - 56 STUDENT BEDS (14 UNITS)
 TYPE B UNIT - 2 STUDENT BEDS (1 UNIT)
 RA UNIT - 2 BEDS (1 UNIT)

- LOBBY / CIRCULATION
- SHARED SPACES - RESIDENCE HALL
- SUPPORT
- UNIT TYPE A
- UNIT TYPE B





North Hall – Typical Floor Plan – August 30, 2011



GROUND FLOOR

- 8,700 SF - PROGRAM SPACE
- 4,110 SF - SUPPORT
- 3,475 SF - SHARED SPACES/ RESIDENCE HALL
- 480 SF - RESIDENTIAL LIFE SUPPORT
- 935 SF - LOBBY/ CIRCULATION

17,700 GSF - GROUND FLOOR

TYPICAL FLOOR

18,200 GSF - FLOORS 2-7

126,900 GSF - TOTAL BUILDING

365 BEDS TOTAL

- 288 (TYPE A @ 755 SF)
- 11 (TYPE B @ 300 SF)
- 66 (TYPE C @ 1,045 SF)

309 SF/BED

2

- TYPE A UNITS - 48 STUDENT BEDS (12 UNITS)
- TYPE B UNITS - 1 STUDENT BED (1 UNIT)
- TYPE C UNITS - 6 STUDENT BEDS (1 UNIT)
- FACULTY UNIT (1 UNIT)

3 - 7

- TYPE A UNITS - 48 STUDENT BEDS (12 UNITS)
- TYPE B UNITS - 2 STUDENT BEDS (2 UNITS)
- TYPE C UNITS - 12 STUDENT BEDS (2 UNITS)

- LOBBY / CIRCULATION
- SHARED SPACES - RESIDENCE HALL
- SUPPORT
- UNIT TYPE A
- UNIT TYPE B
- UNIT TYPE C





North Hall - Perspective View Key Plan





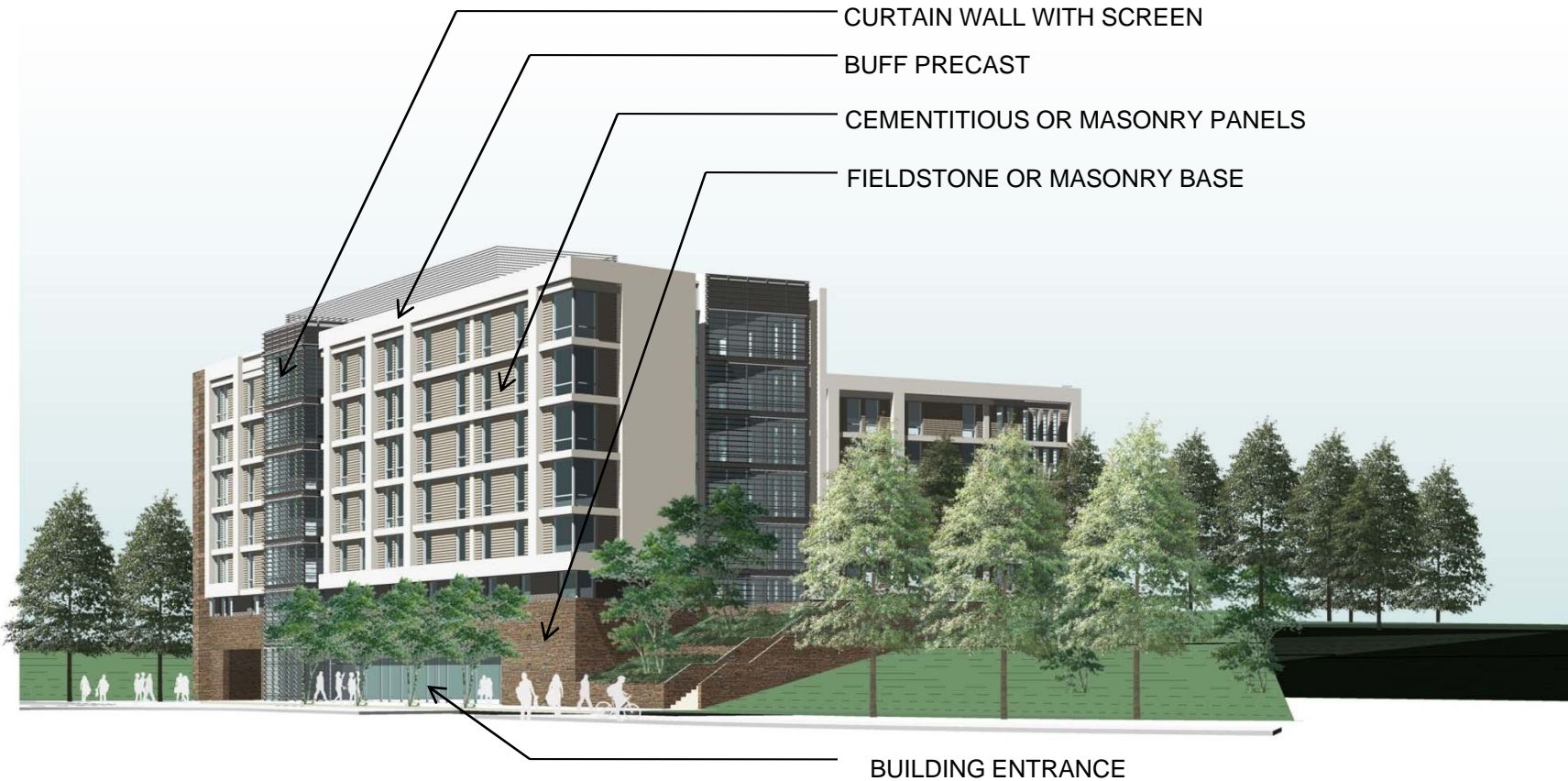
AMERICAN UNIVERSITY

North Hall – Perspective View 1 – from McDowell





North Hall – Perspective View 1 – from McDowell





AMERICAN UNIVERSITY

North Hall – Perspective View 2 – from Mass. Ave.





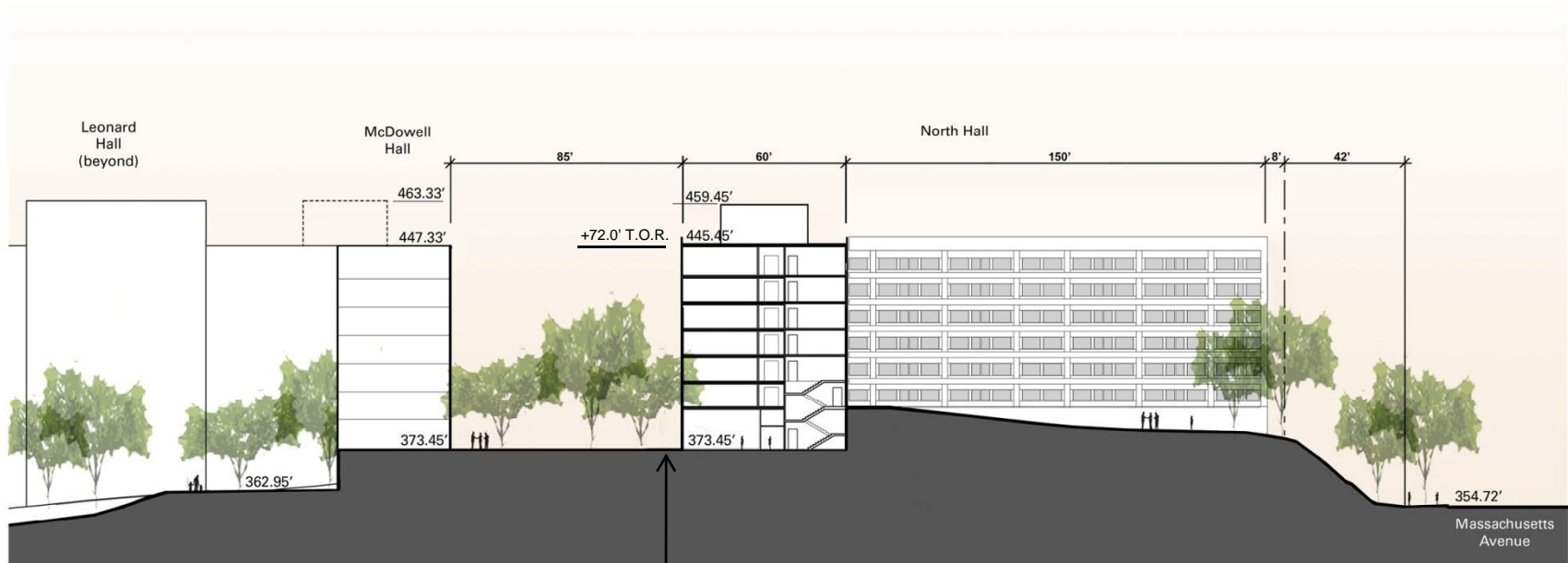
AMERICAN UNIVERSITY

North Hall – Perspective View 3 – from Wesley Seminary





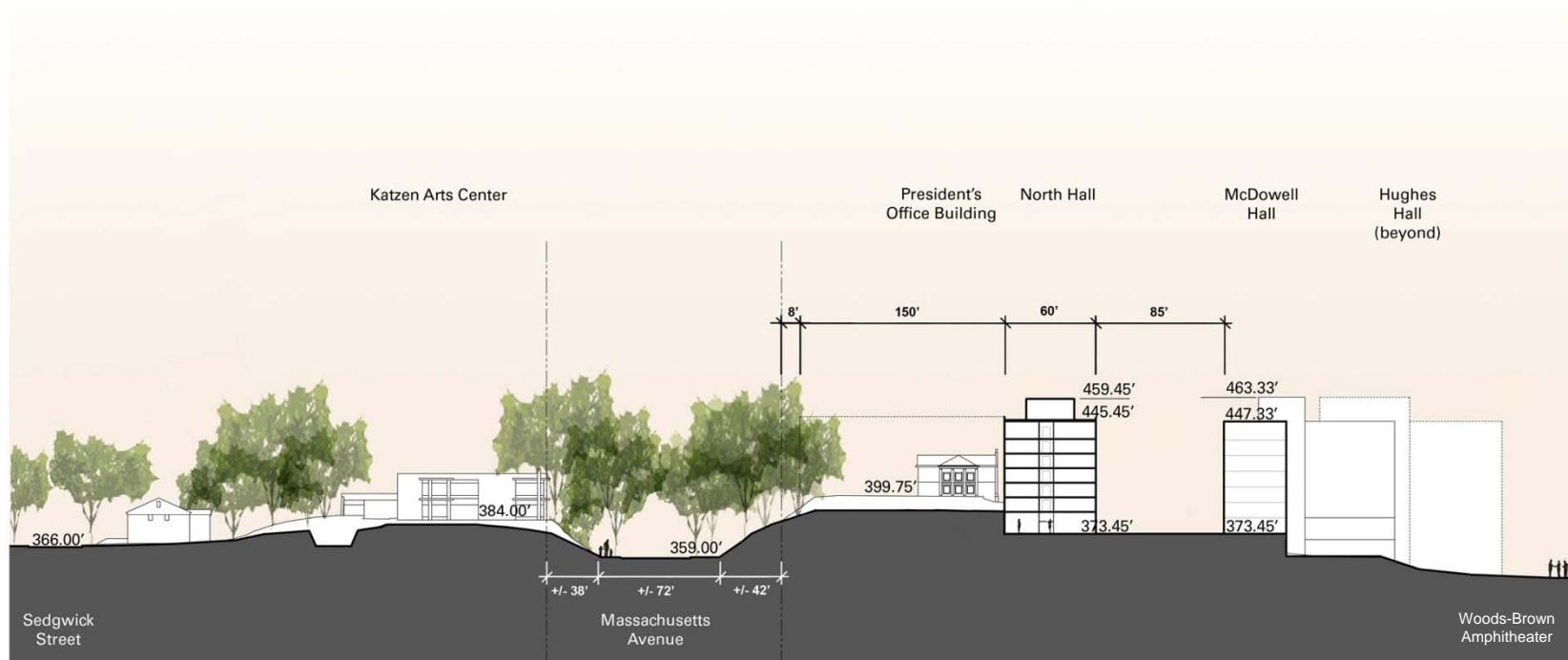
North Hall – Site Section – July 18, 2011



BUILDING HEIGHT MEASUREMENT POINT

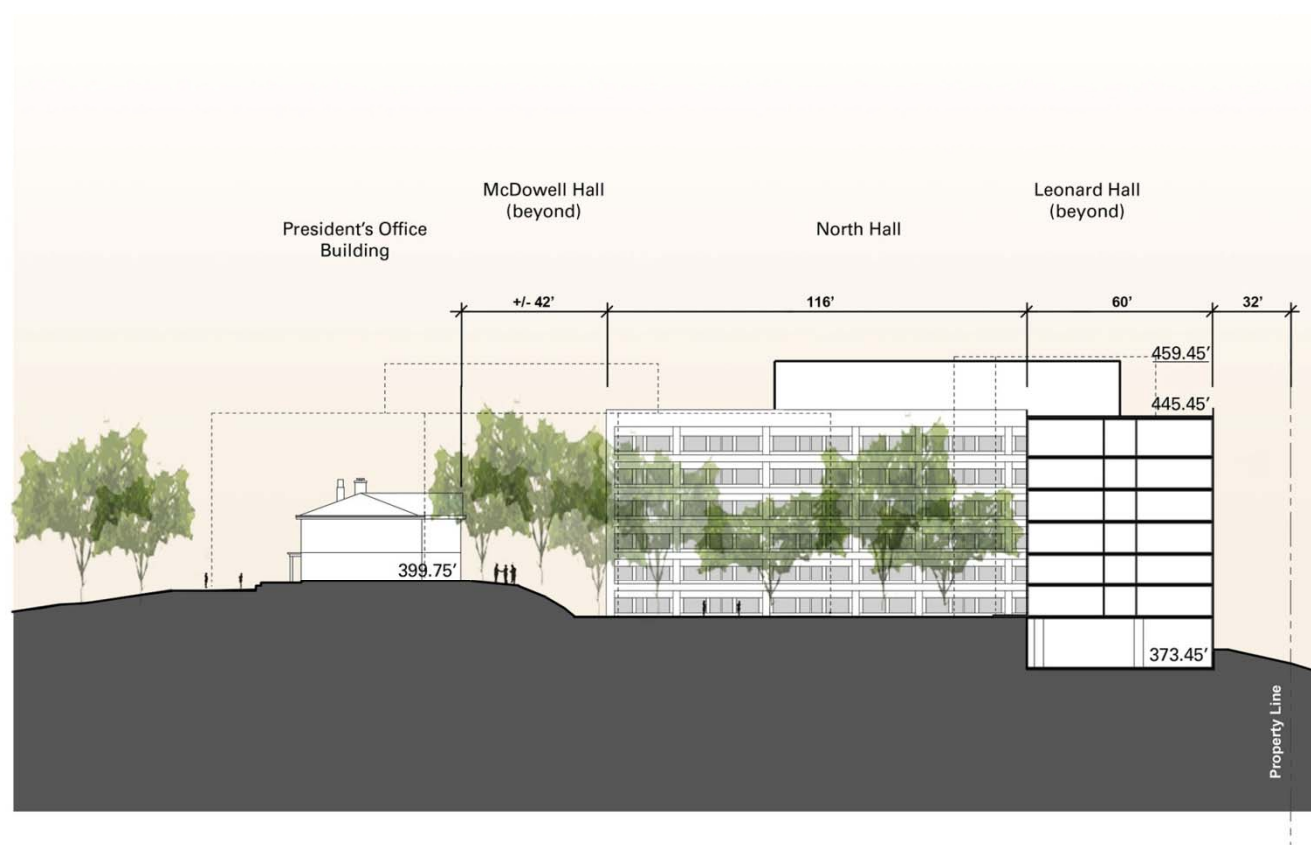


North Hall – Site Section – July 18, 2011





North Hall – Site Section – July 18, 2011





AMERICAN UNIVERSITY

North Hall – Existing View From Katzen







AMERICAN UNIVERSITY

North Hall – Outline View From Katzen





AMERICAN UNIVERSITY

North Hall – Existing View From 45th Street





AMERICAN UNIVERSITY

North Hall – Massing View From 45th Street





AMERICAN UNIVERSITY

North Hall – Outline View From 45th Street





AMERICAN UNIVERSITY

North Hall – Existing View From Wesley Seminary





AMERICAN UNIVERSITY

North Hall – Massing View From Wesley Seminary





AMERICAN UNIVERSITY

North Hall – Outline View From Wesley Seminary







AMERICAN UNIVERSITY

North Hall – Massing View From Wesley Seminary





AMERICAN UNIVERSITY

North Hall – Massing View From Wesley Seminary





Thank You

